



*Claude Monet*

*The Beach at Sainte-Adresse, 1867*



Monet

*Jardin à Sainte-Adresse, 1867*

CLAUDE MONET



Claude Monet

*Woman in a Garden, 1867*



Monet

*The Magpie*, 1868-1869

*Claude Monet*

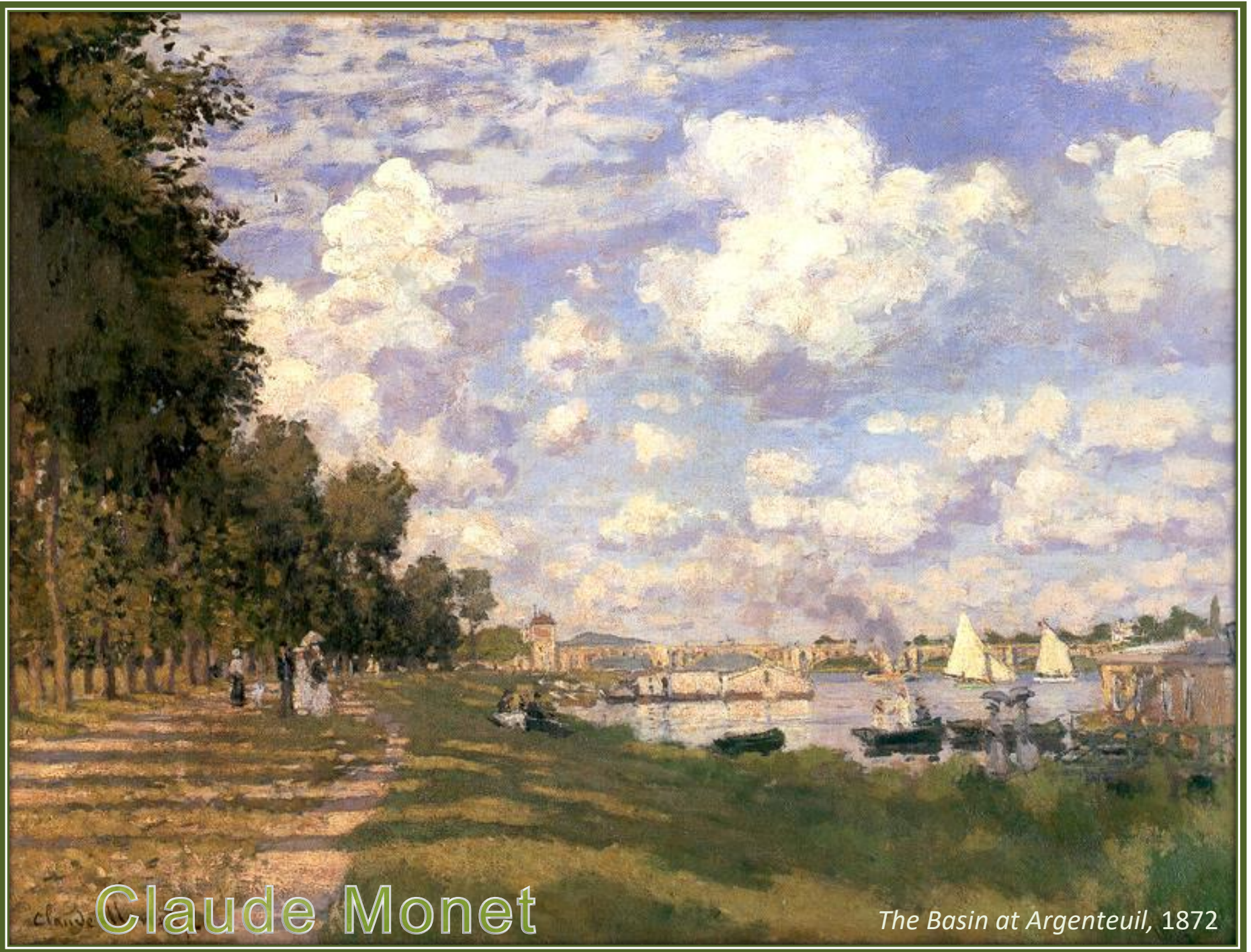


*The Boardwalk at Trouville, 1870*



*Madame Monet on a Couch, 1871*

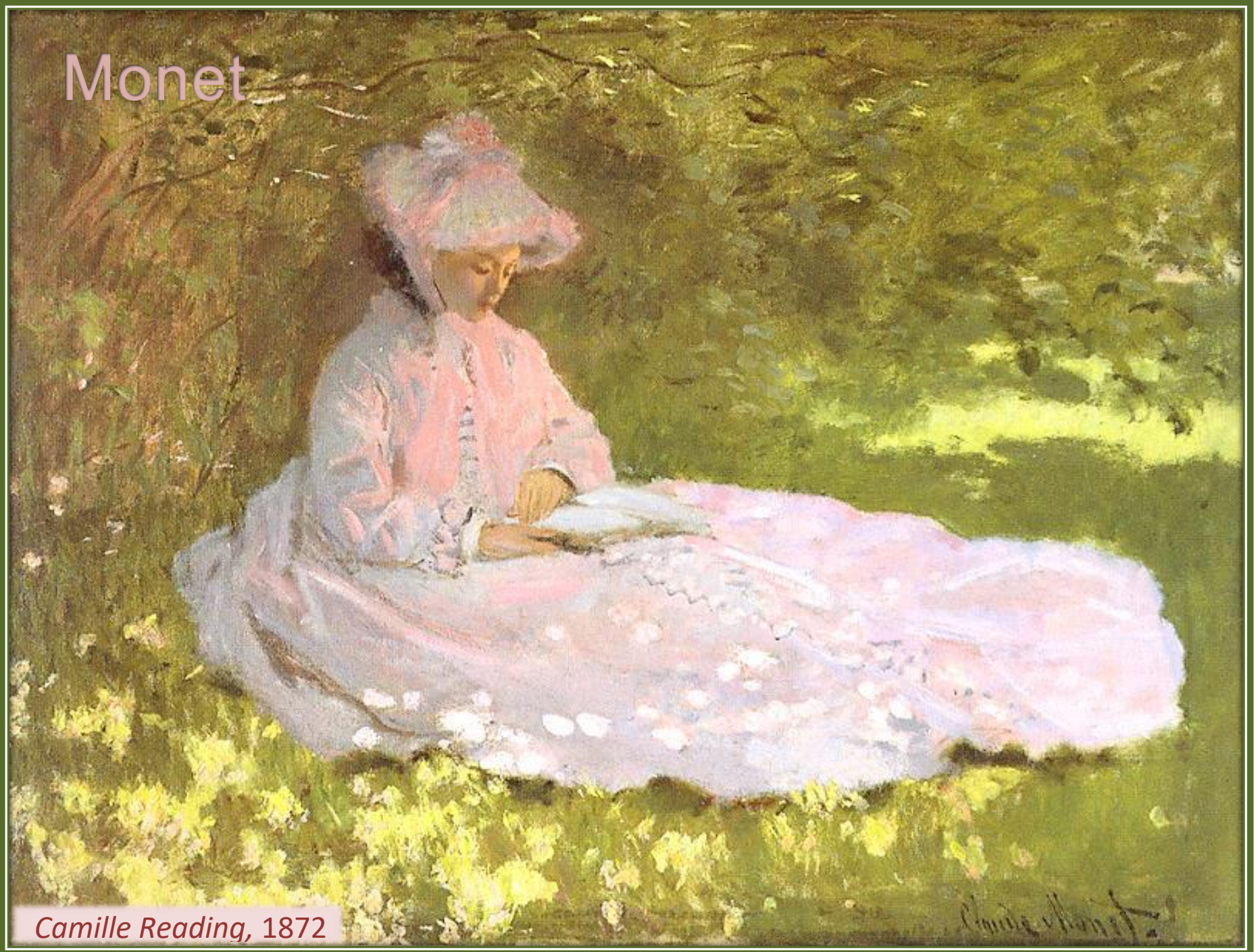
*Claude Monet*



Claude Monet

*The Basin at Argenteuil, 1872*

Monet



*Camille Reading, 1872*

*Claude Monet*



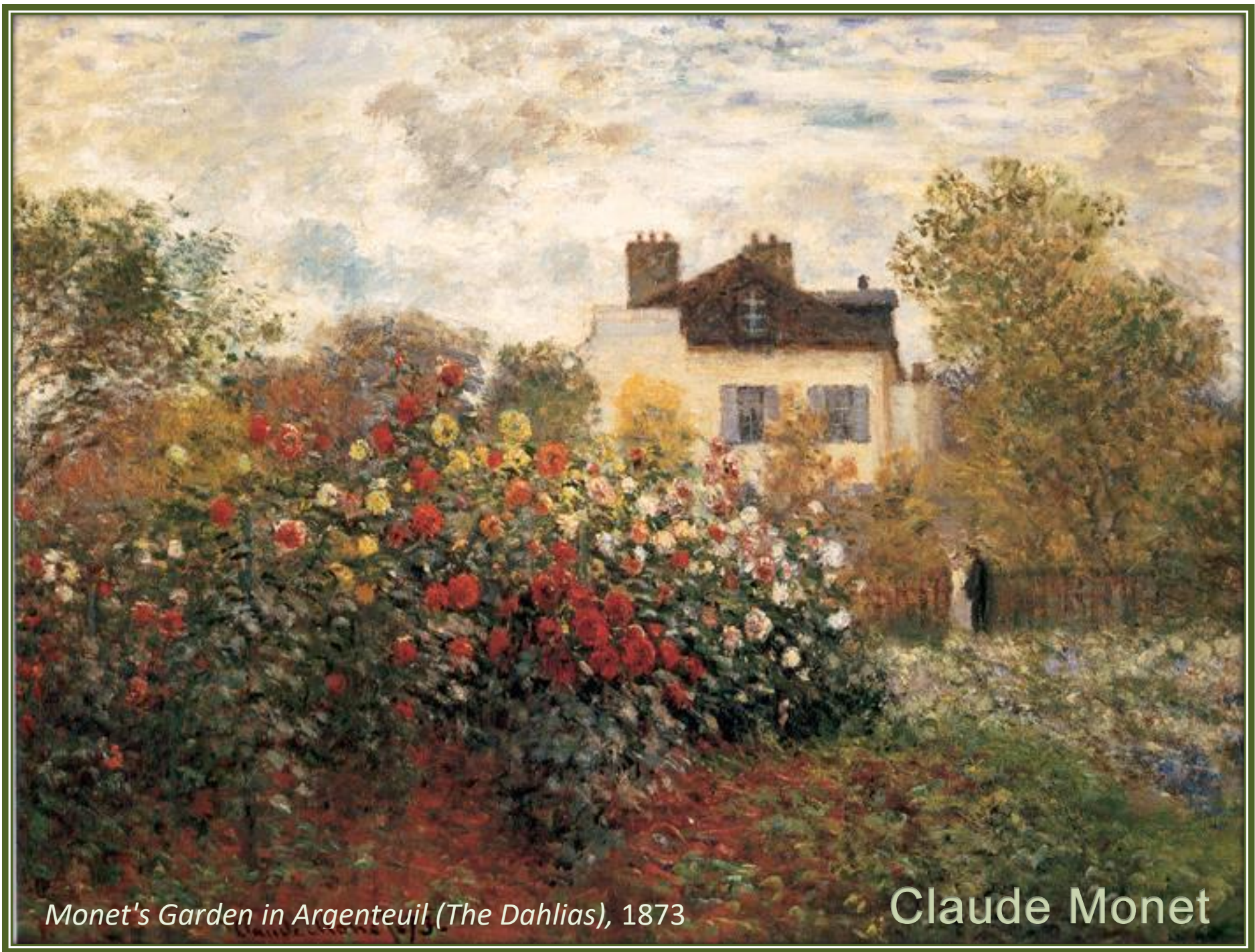


*The Artist's House at Argenteuil, 1873*

# Claude Monet

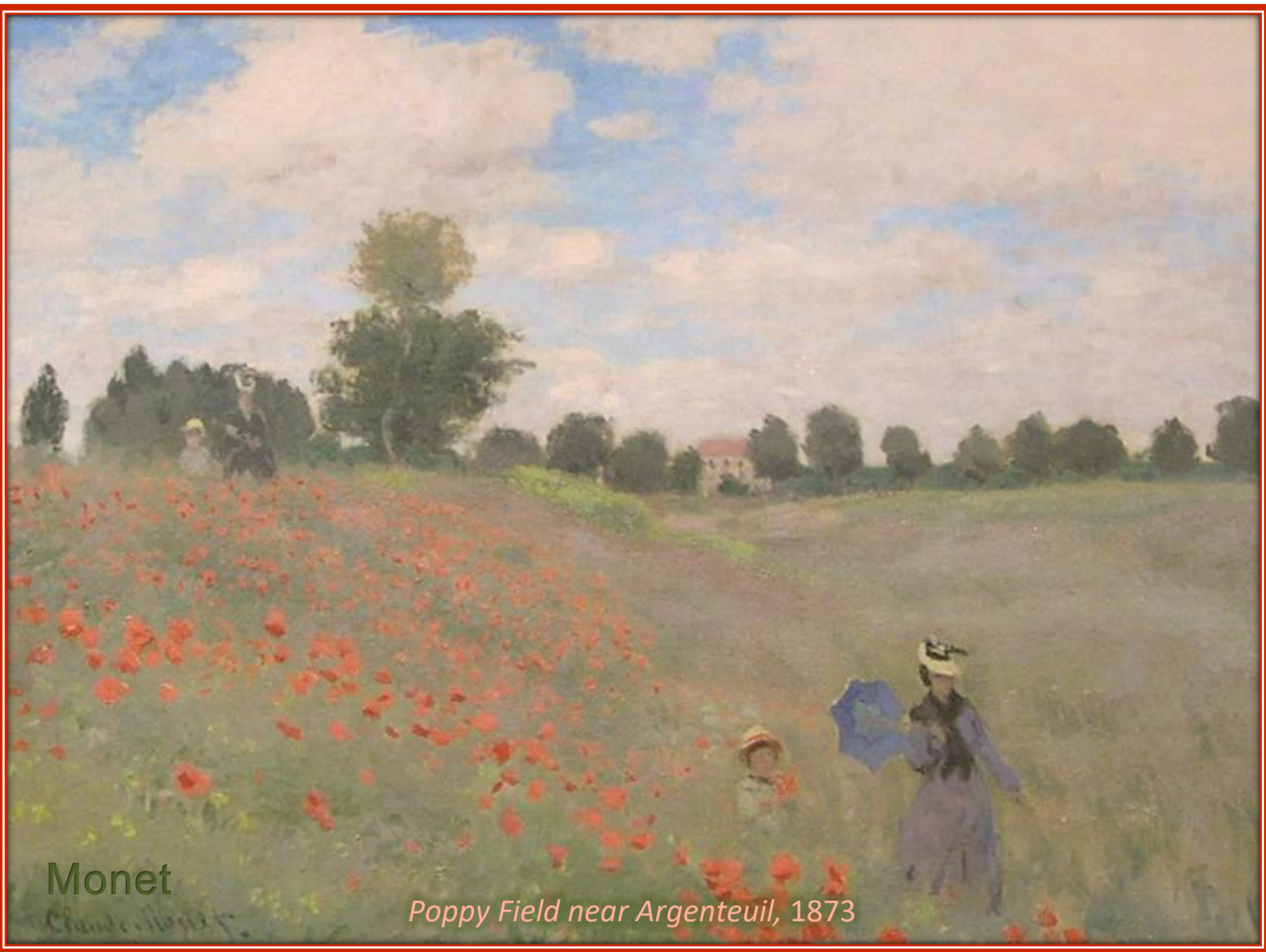
*Impression, Sunrise, 1873*





*Monet's Garden in Argenteuil (The Dahlias), 1873*

Claude Monet



Monet

*Poppy Field near Argenteuil, 1873*



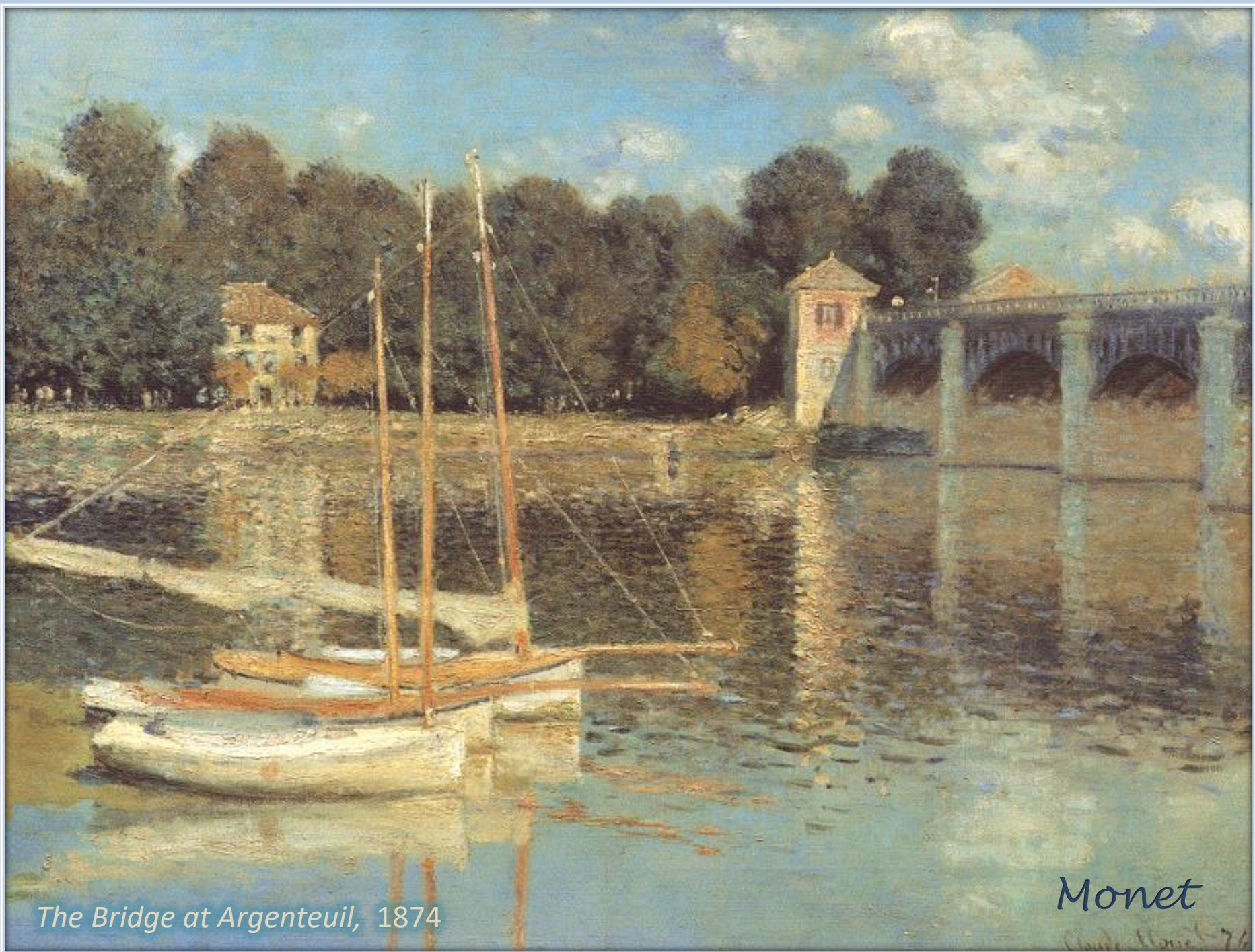
Monet

The Bench, c. 1873



Monet

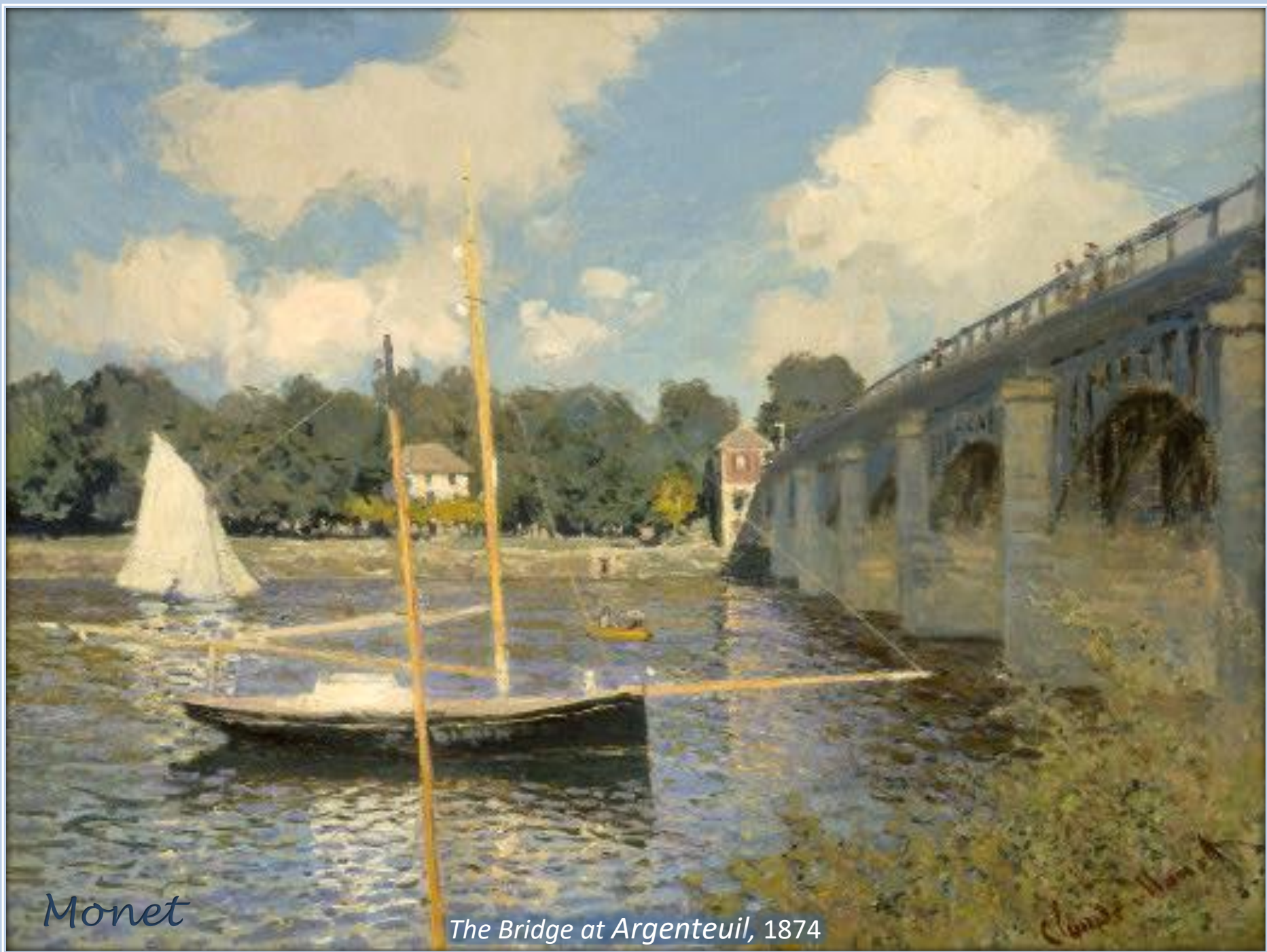
*The Luncheon, 1873*



*The Bridge at Argenteuil, 1874*

*Monet*

*Claude Monet 74*



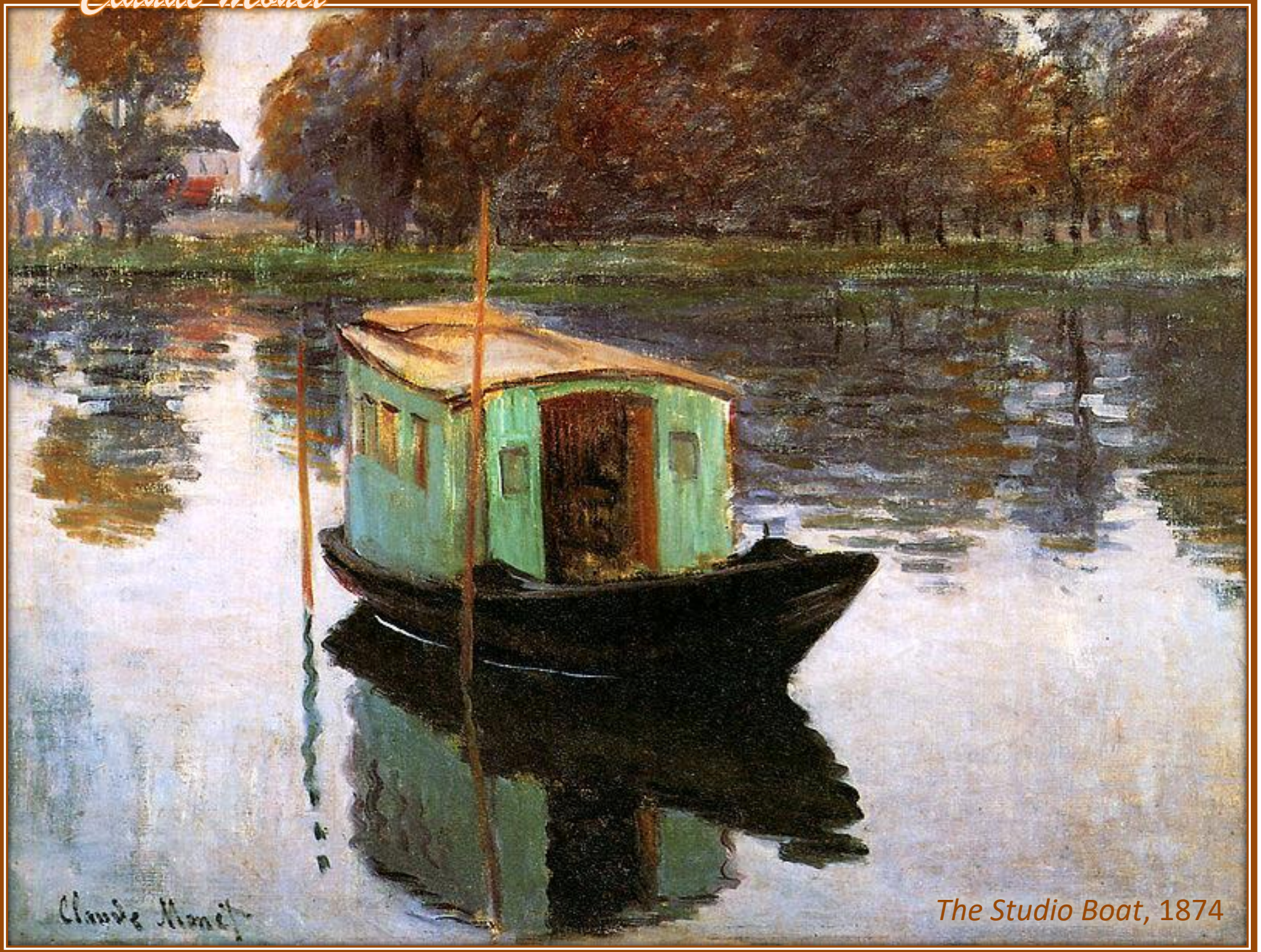
Monet

The Bridge at Argenteuil, 1874

Claude Monet



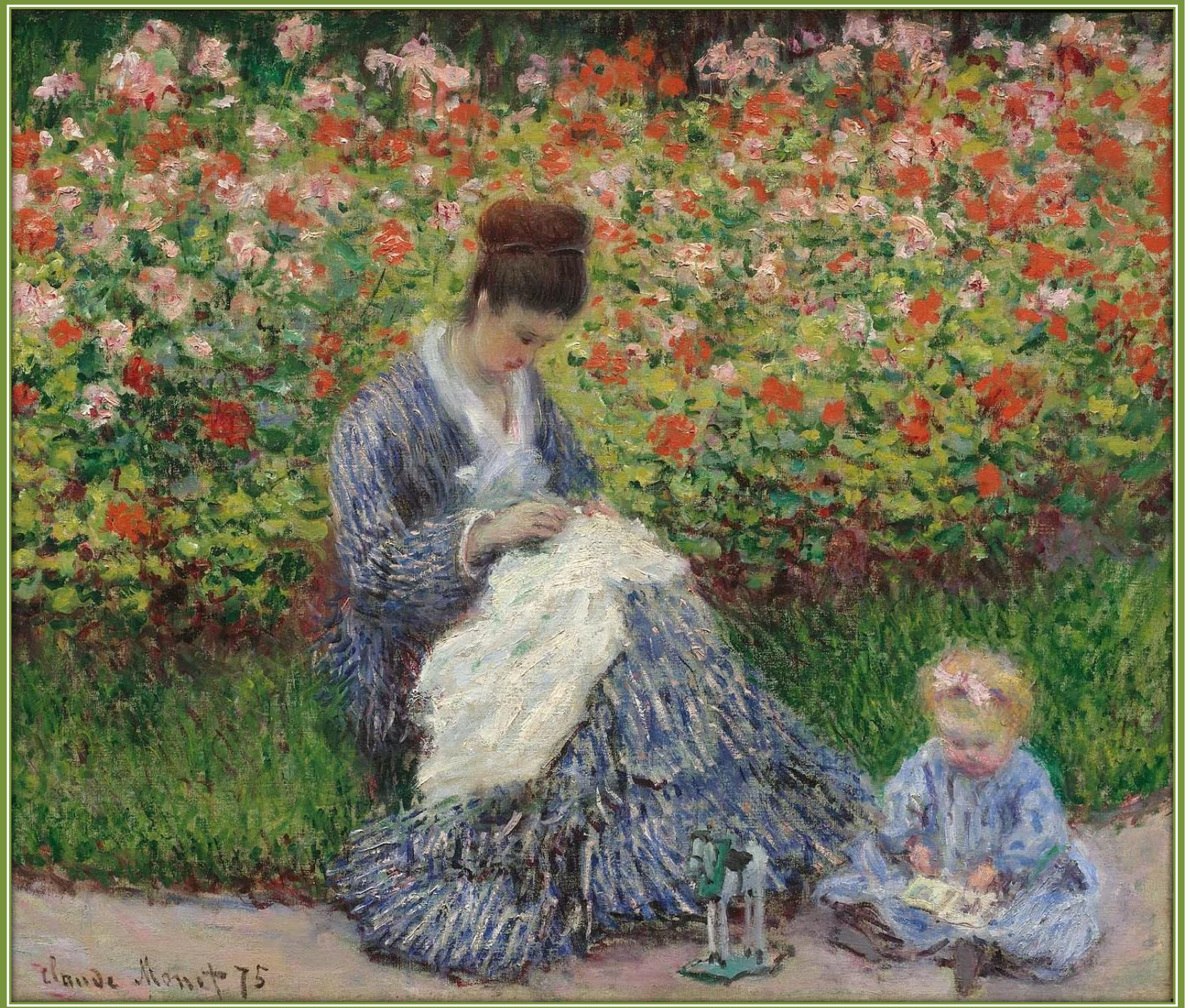
*Claude Monet*



*The Studio Boat, 1874*

# Claude Monet

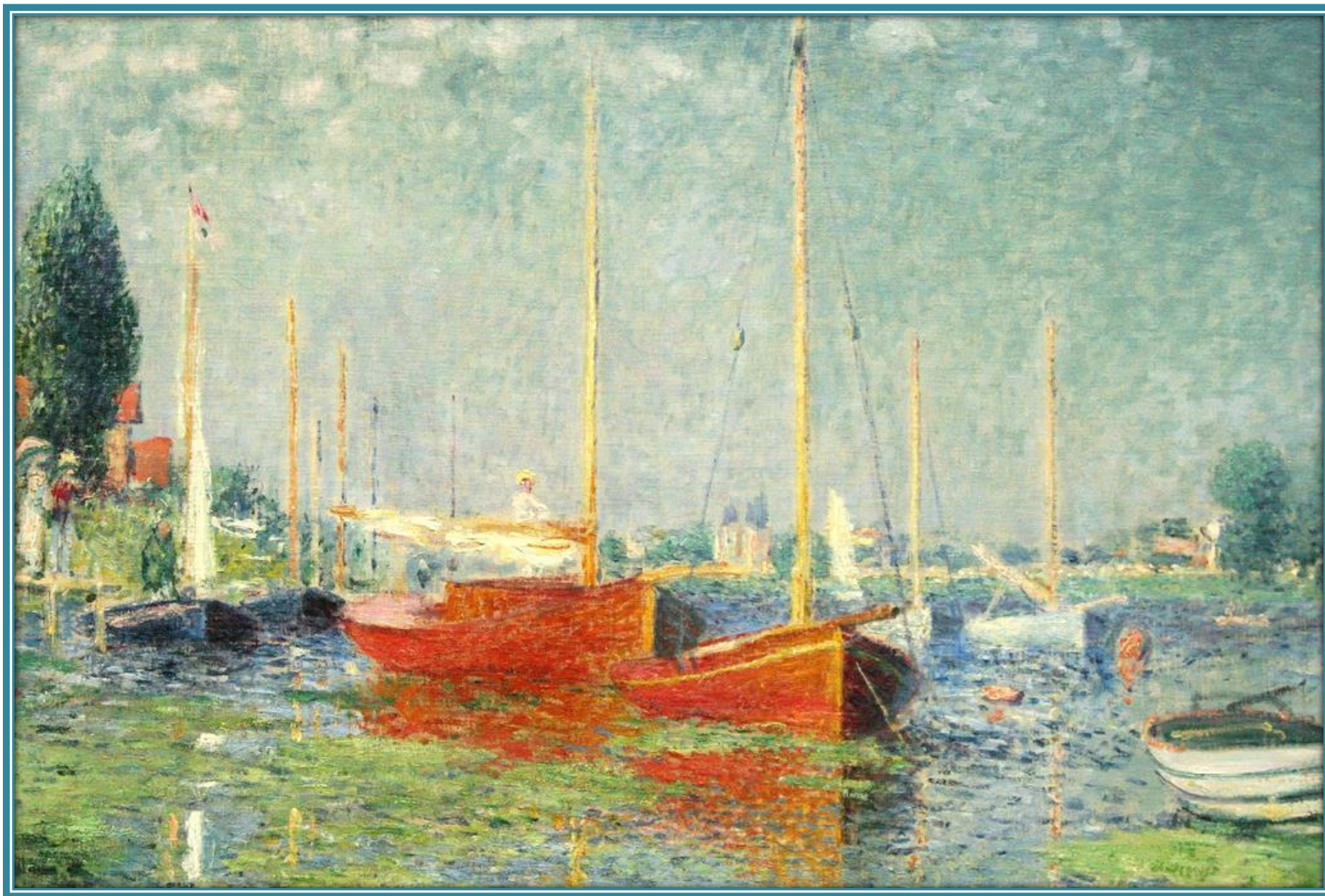
*Camille  
Monet and  
a Child in  
the Artist's  
Garden in  
Argenteuil,  
1875*





*The Park Monceau, 1875*

*Monet*



*Red Boats, Argenteuil, 1875*

*Claude Monet*

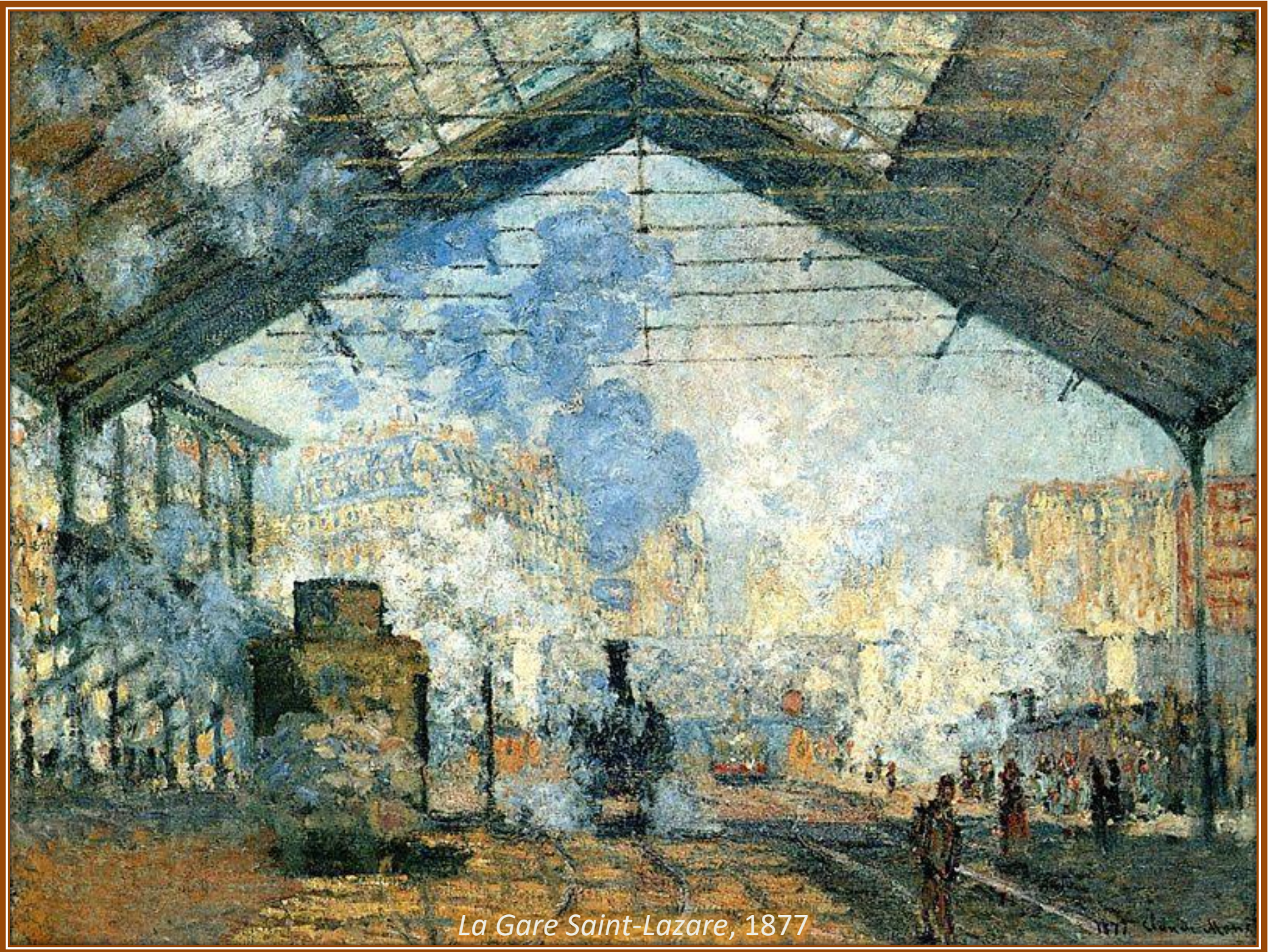


*The Train in the Snow, 1875*

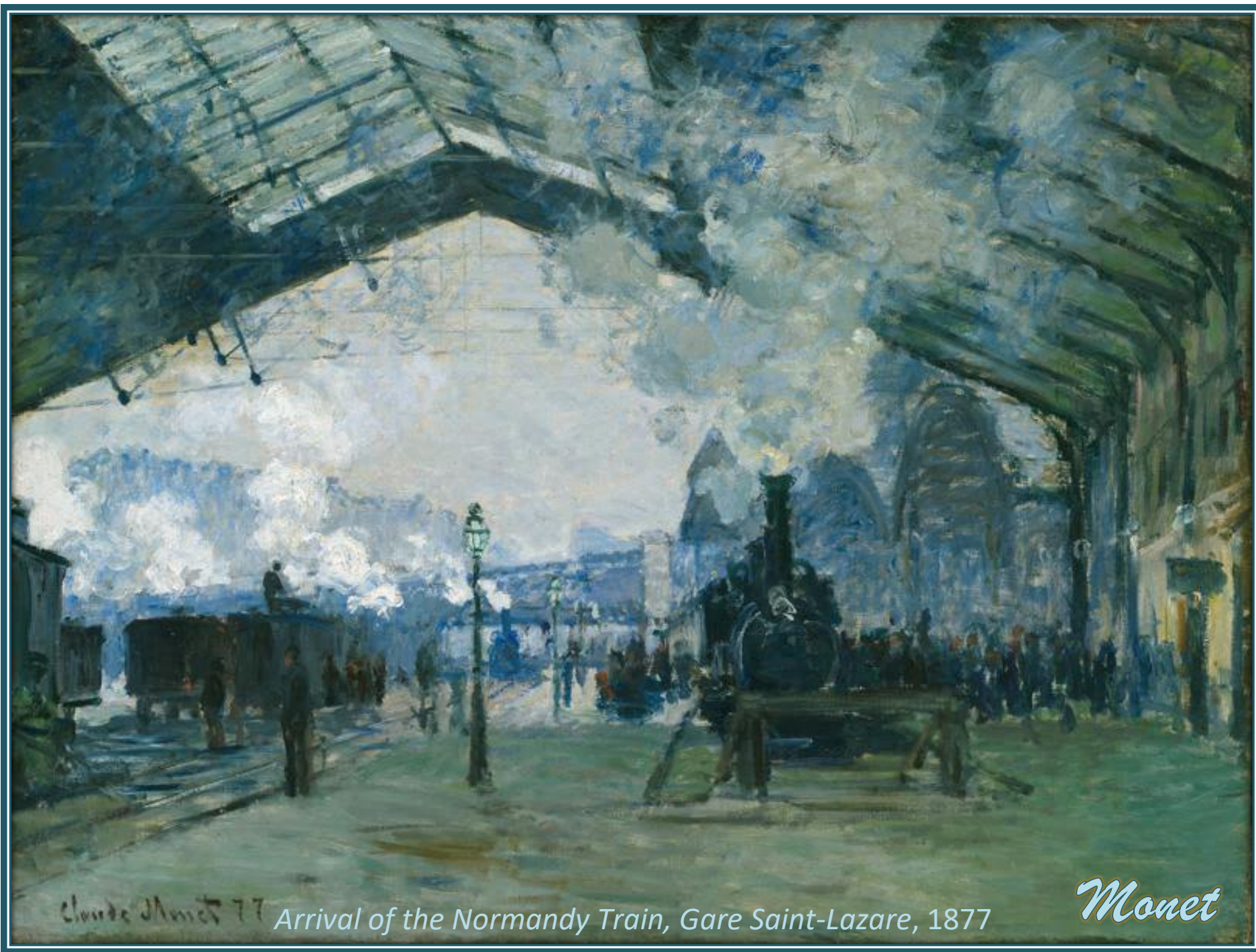
Monet

Claude Monet 75

Claude Monet



*La Gare Saint-Lazare, 1877*



Claude Monet 77

Arrival of the Normandy Train, Gare Saint-Lazare, 1877

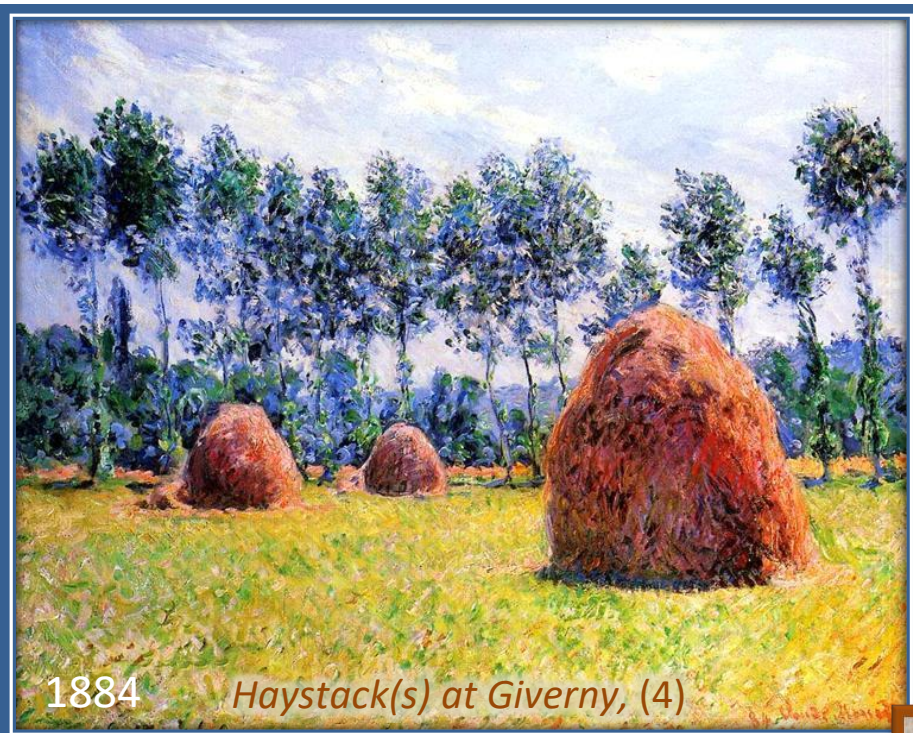
Monet



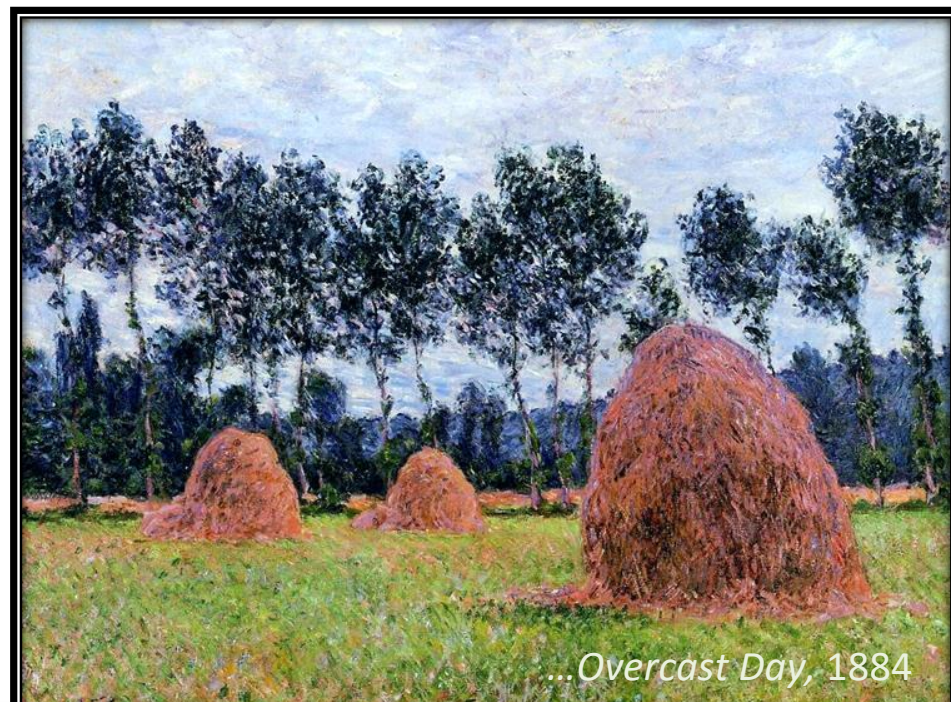
*Path in the Wheatfield at Pourville, 1882*

*Monet*  
*Claude Monet 82*





1884 *Haystack(s) at Giverny, (4)*



...*Overcast Day, 1884*

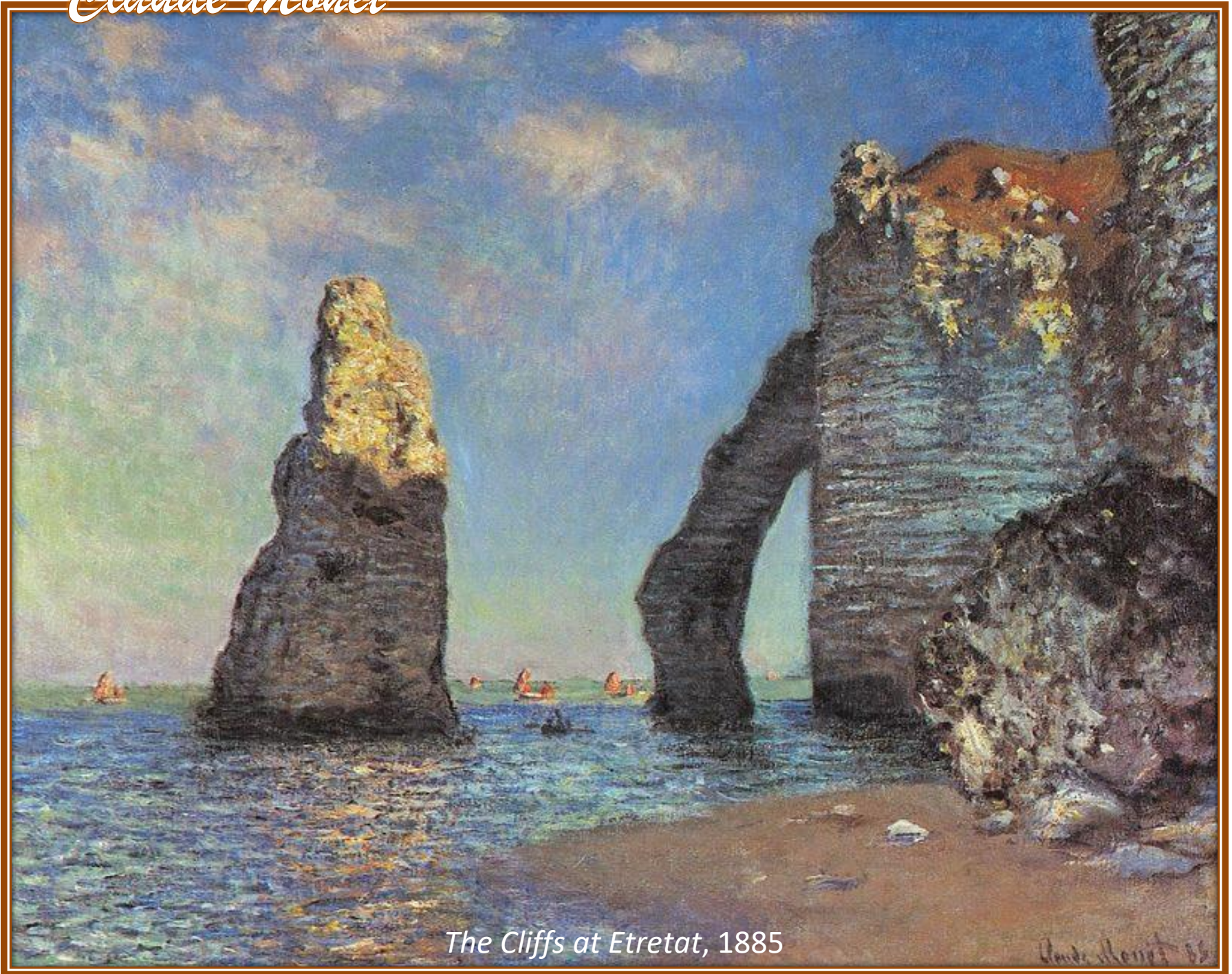


1885



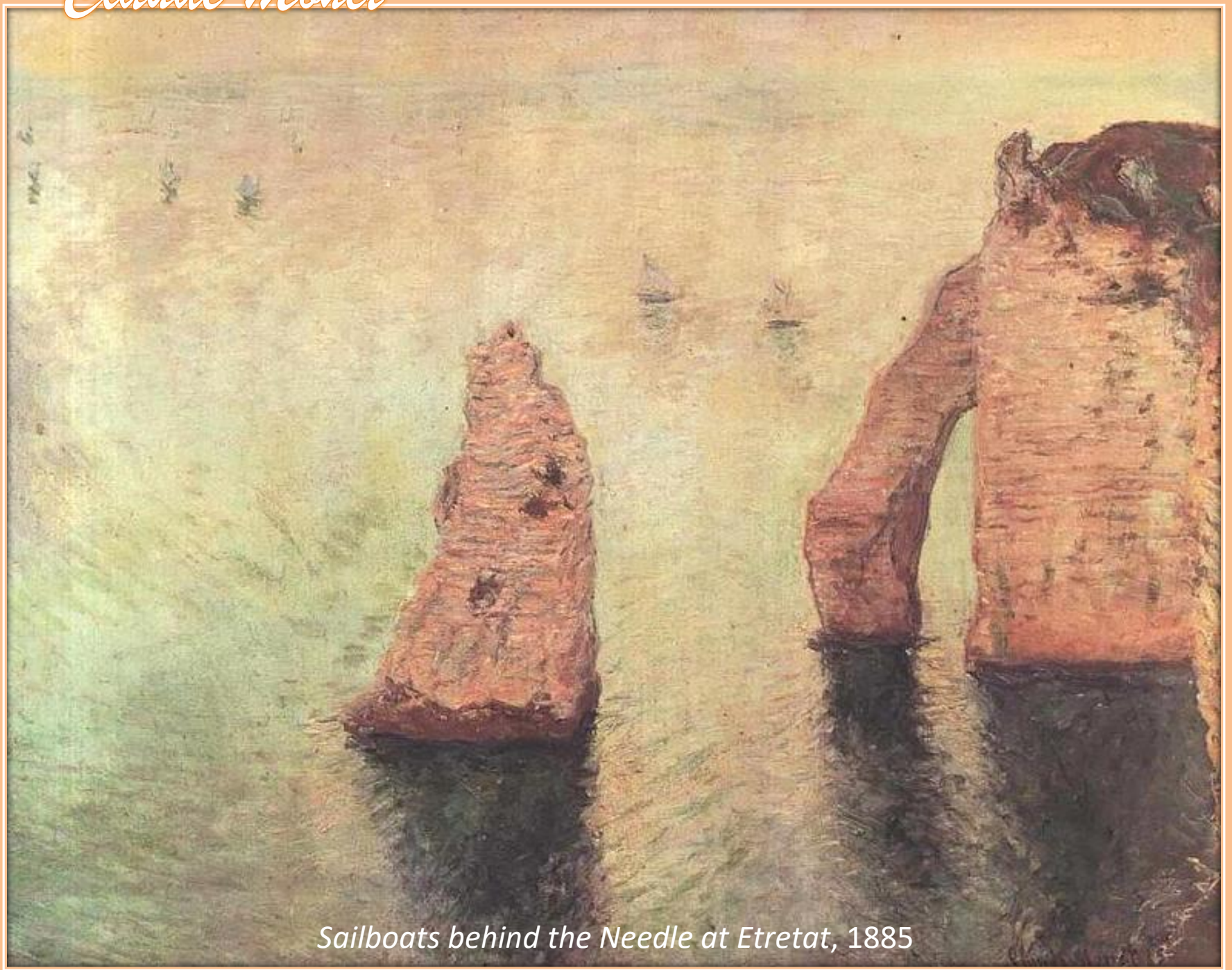
...*Last Sunrays, 1890*

*Claude Monet*



*The Cliffs at Etretat, 1885*

*Claude Monet*



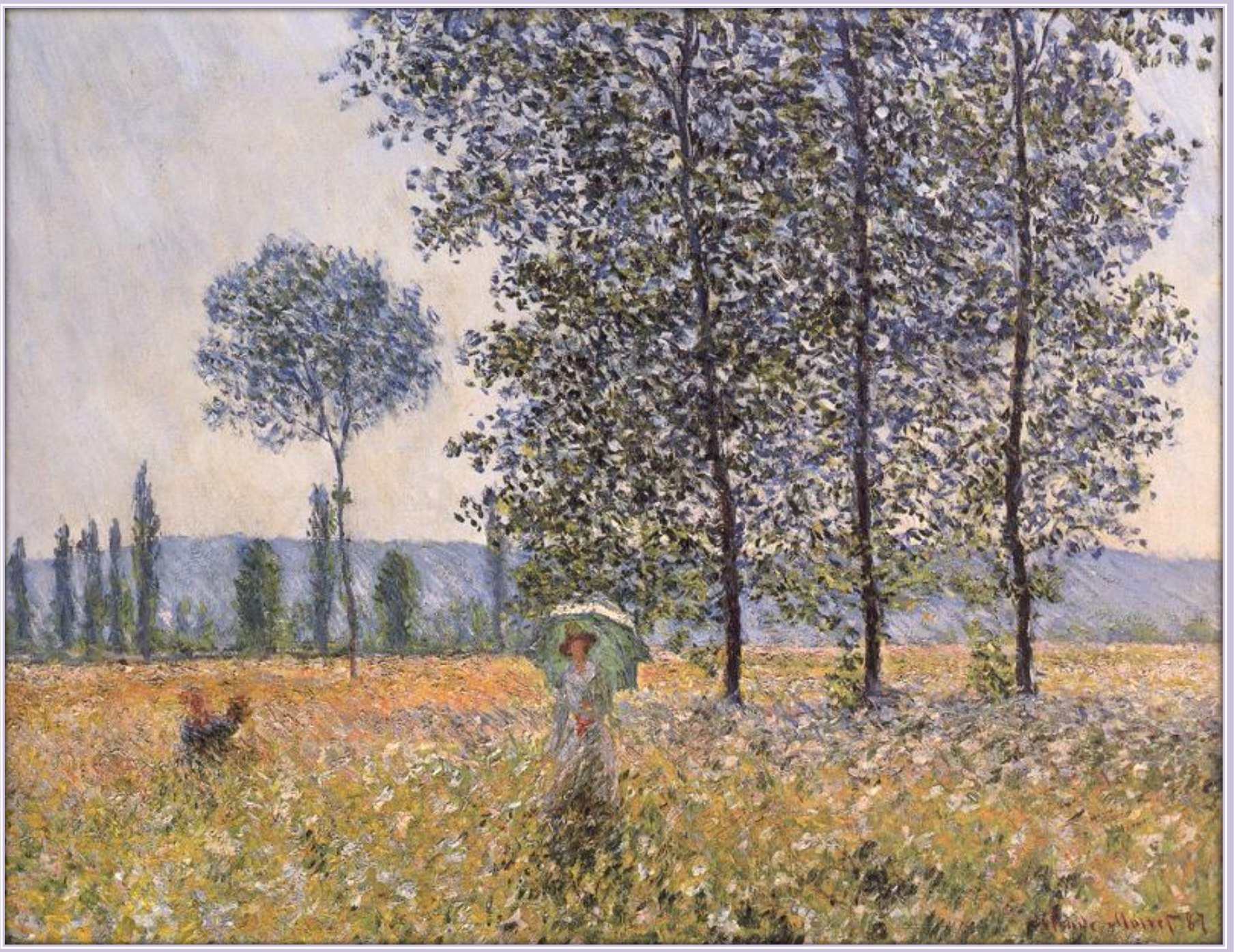
*Sailboats behind the Needle at Etretat, 1885*

*Claude Monet*



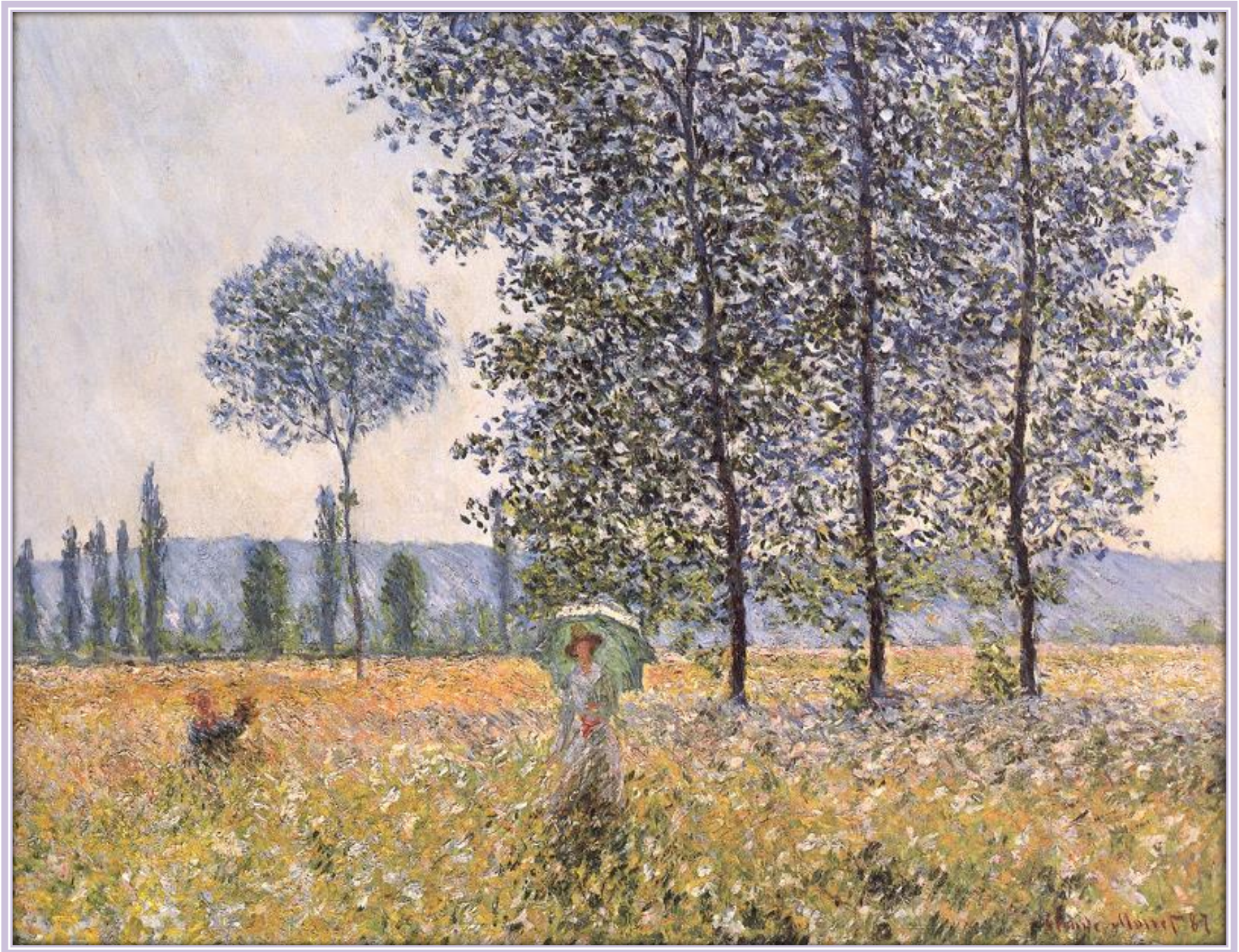
*Tulip Fields in Holland, 1886*

Claude Monet



*Under the Poplars, Sunlight Effect, 1887*

Claude Monet



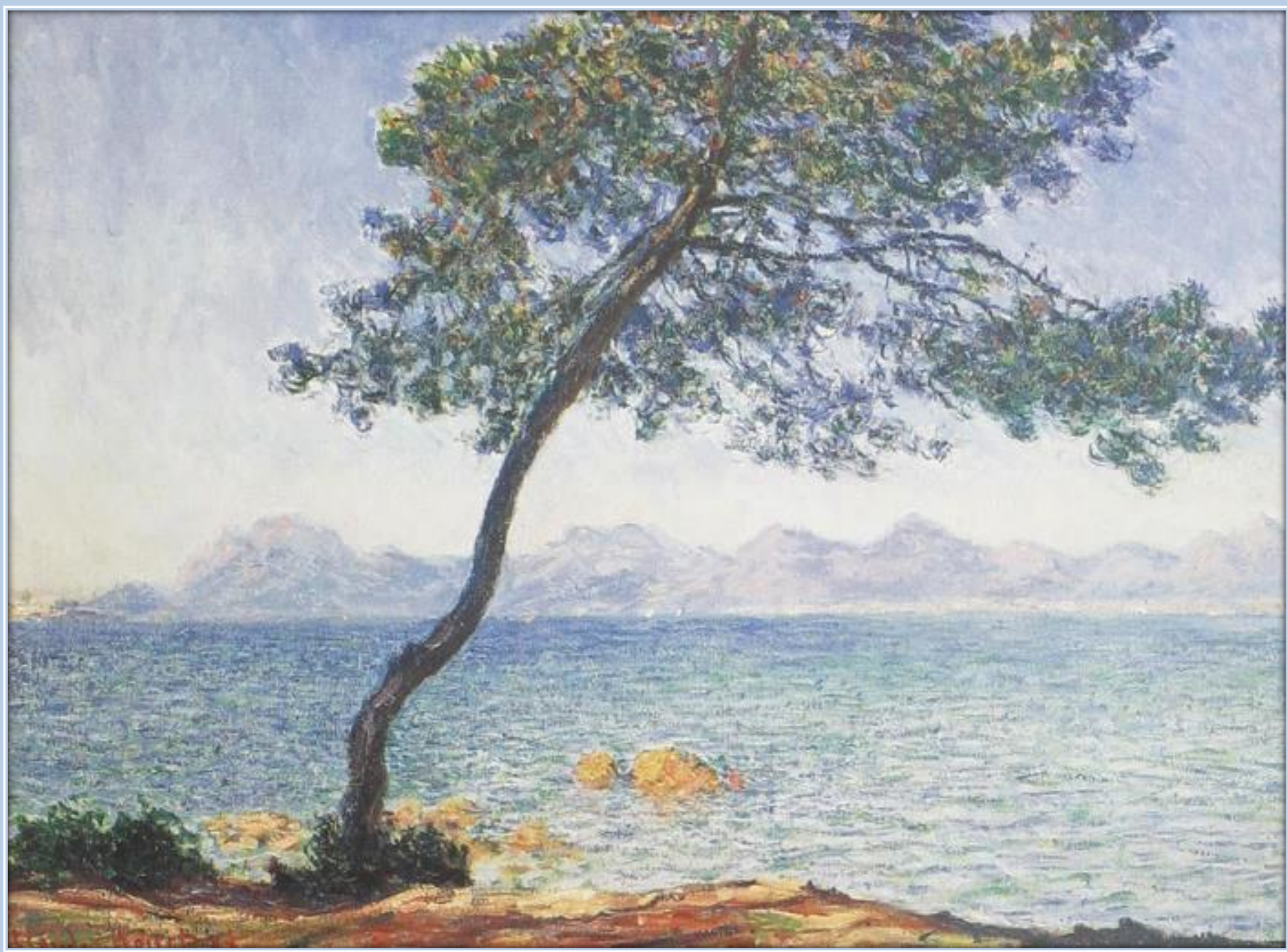
*Under the Poplars, Sunlight Effect, 1887*

# Claude Monet



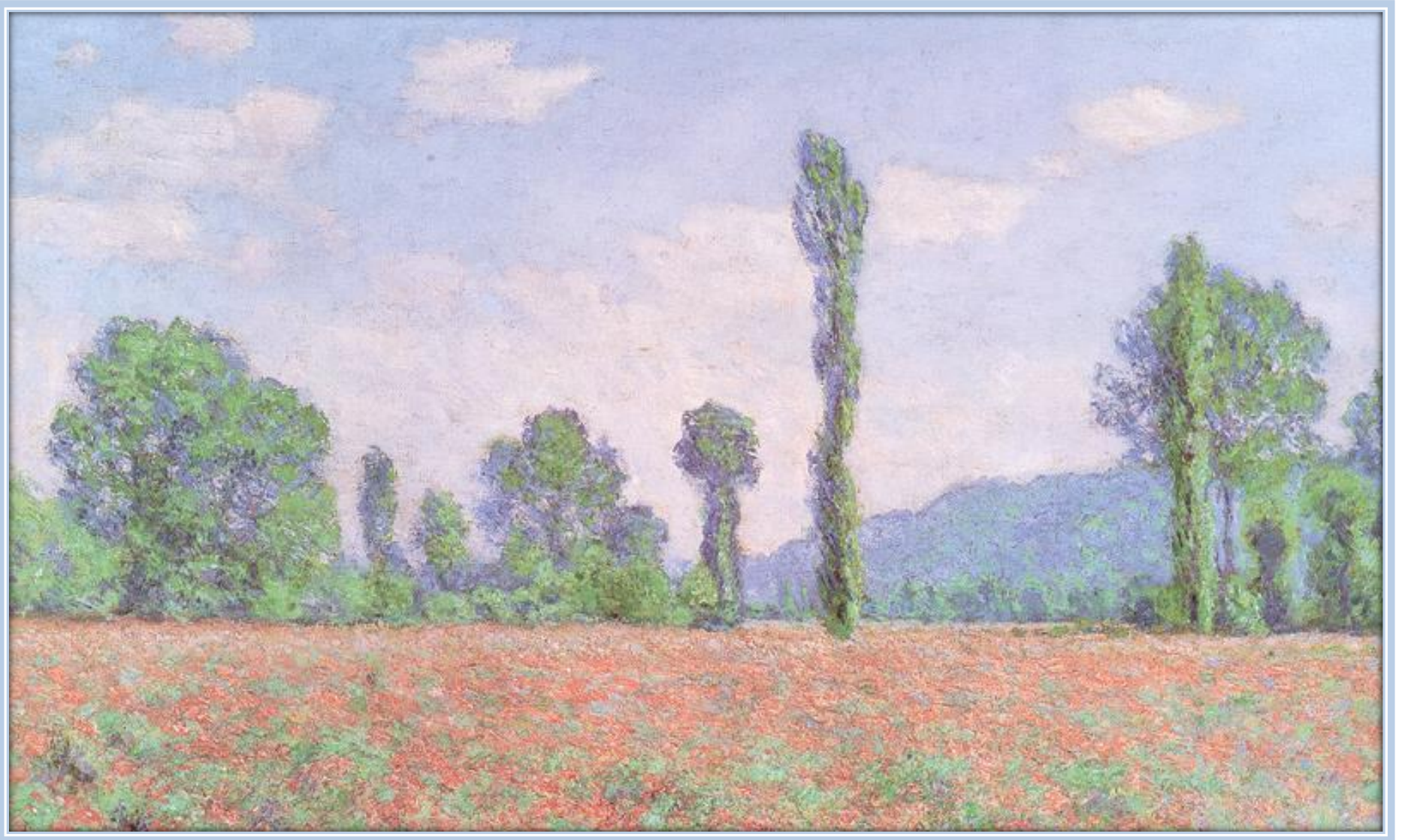
*In the Woods at Giverny: Blanche Hoschedé at Her Easel with Suzanne Hoschedé Reading, 1887*

# Claude Monet



*Antibes, 1888*

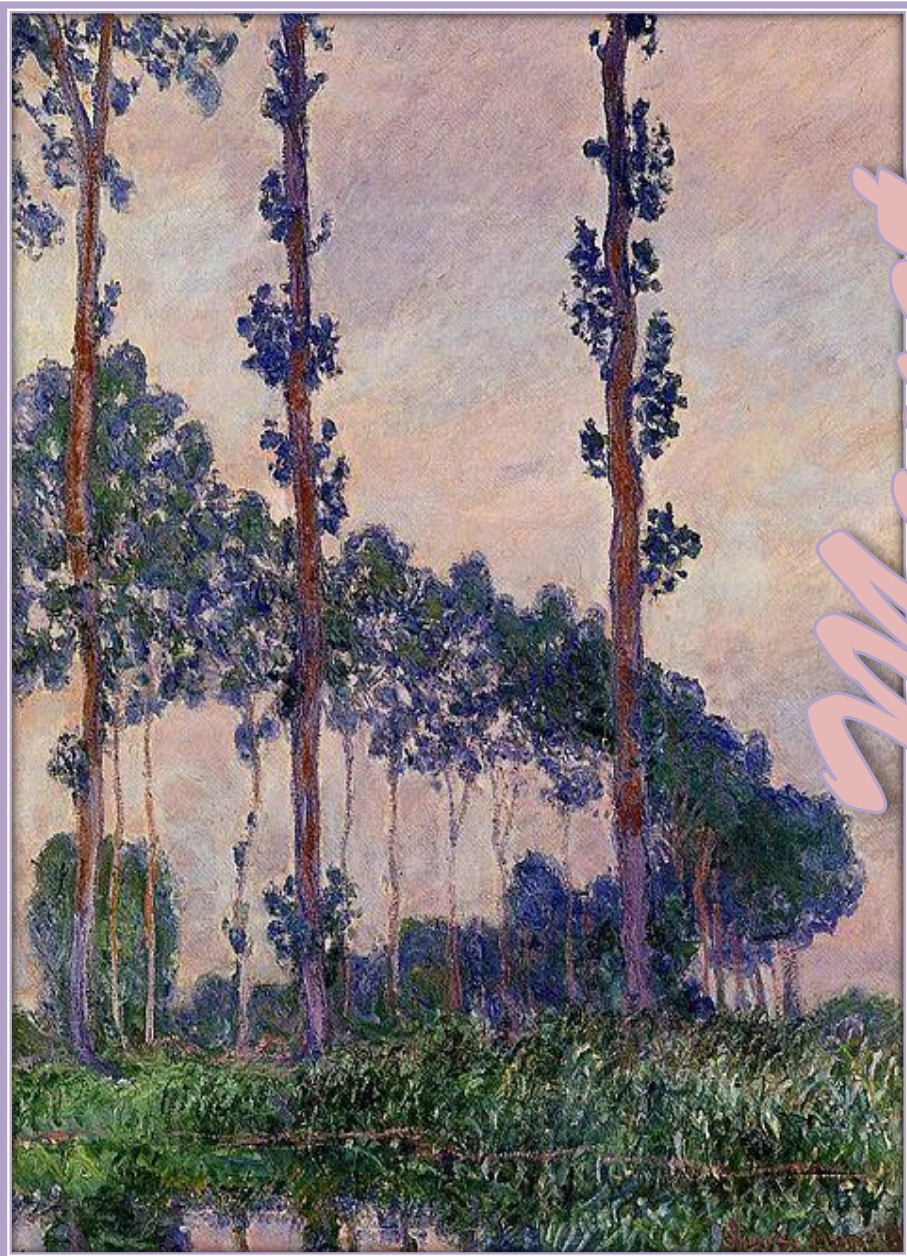




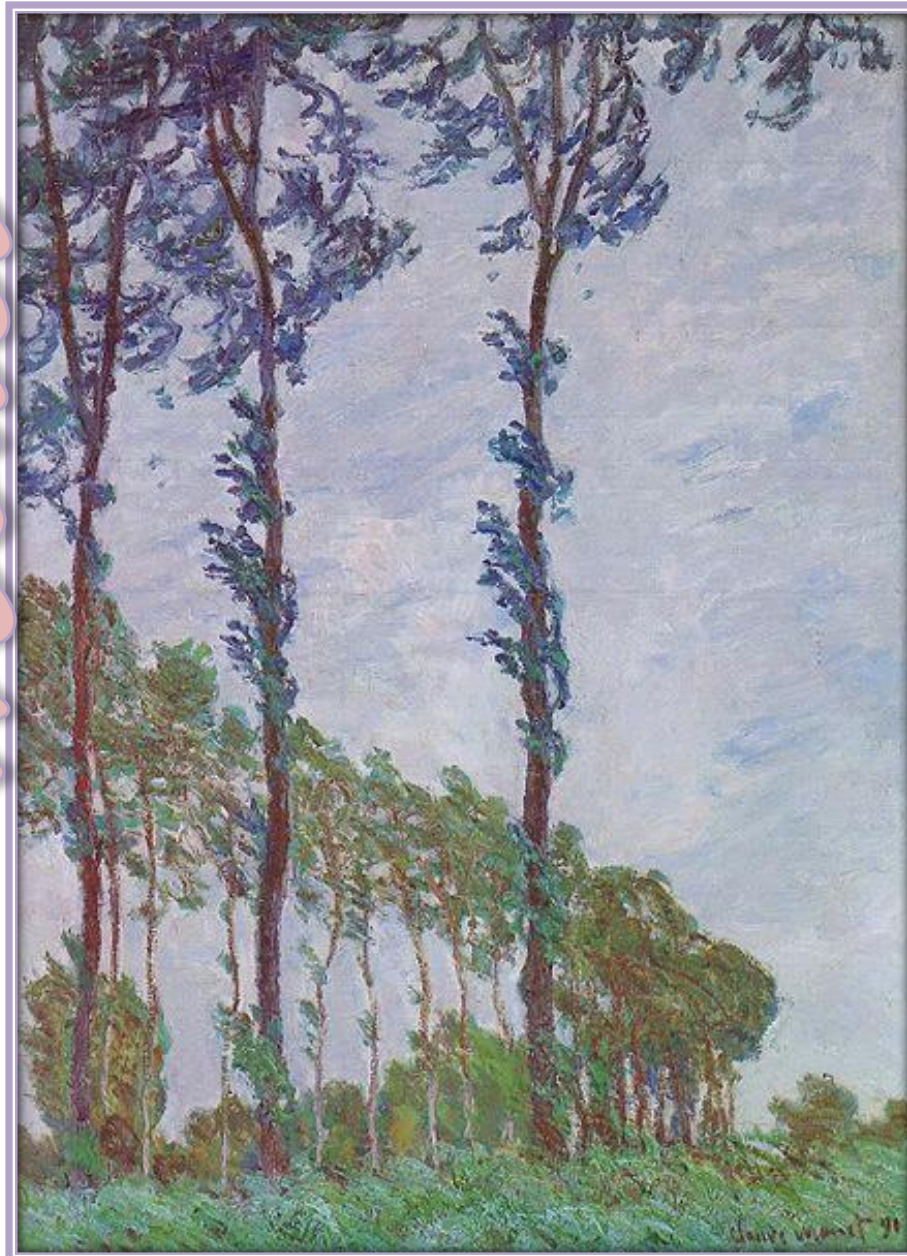
*Field of Poppies, 1890*

Claude Monet

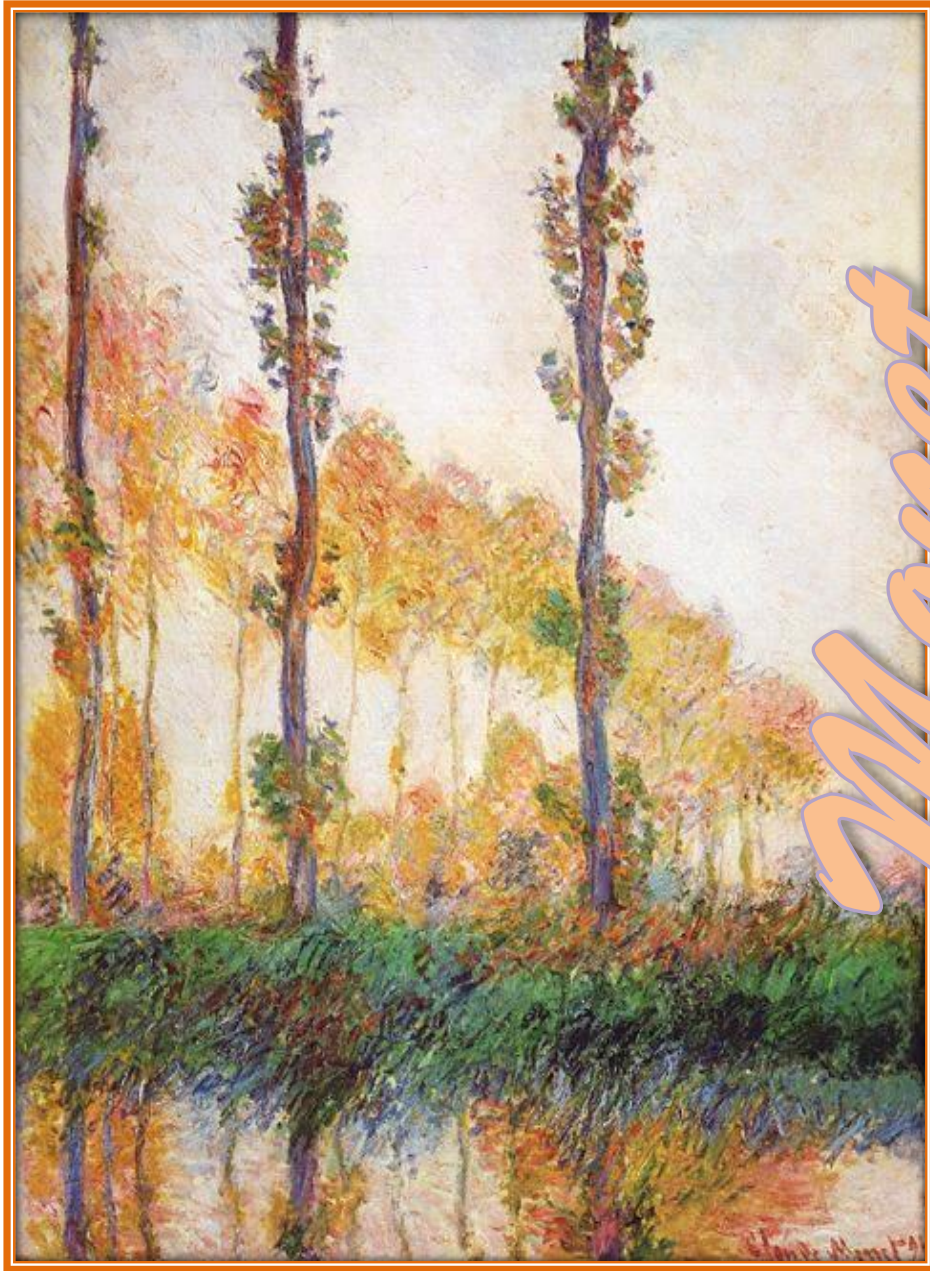
*Monet*



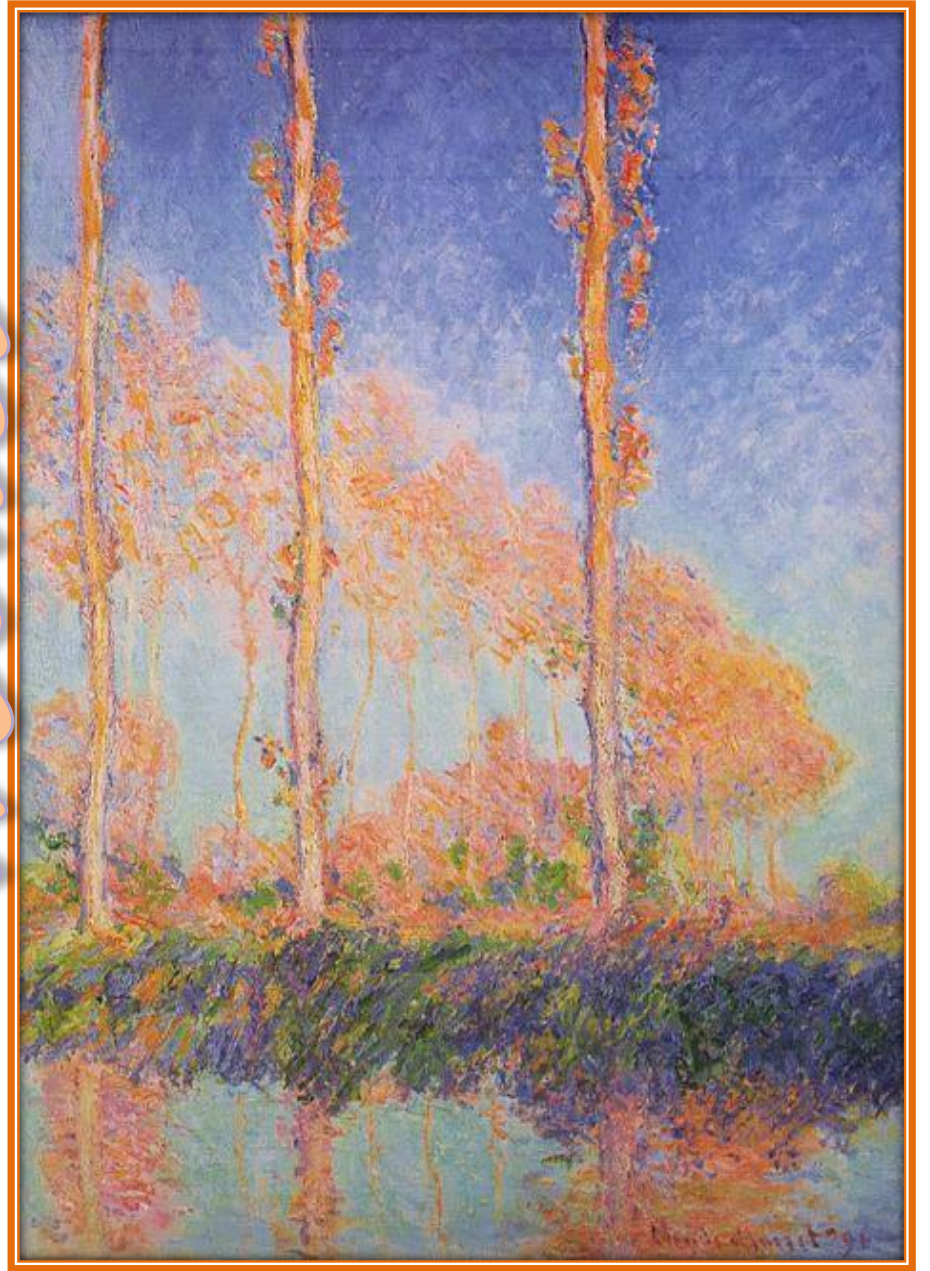
*Three Trees in Grey Weather, 1891*



*Poplars, (Wind Effect), 1891*



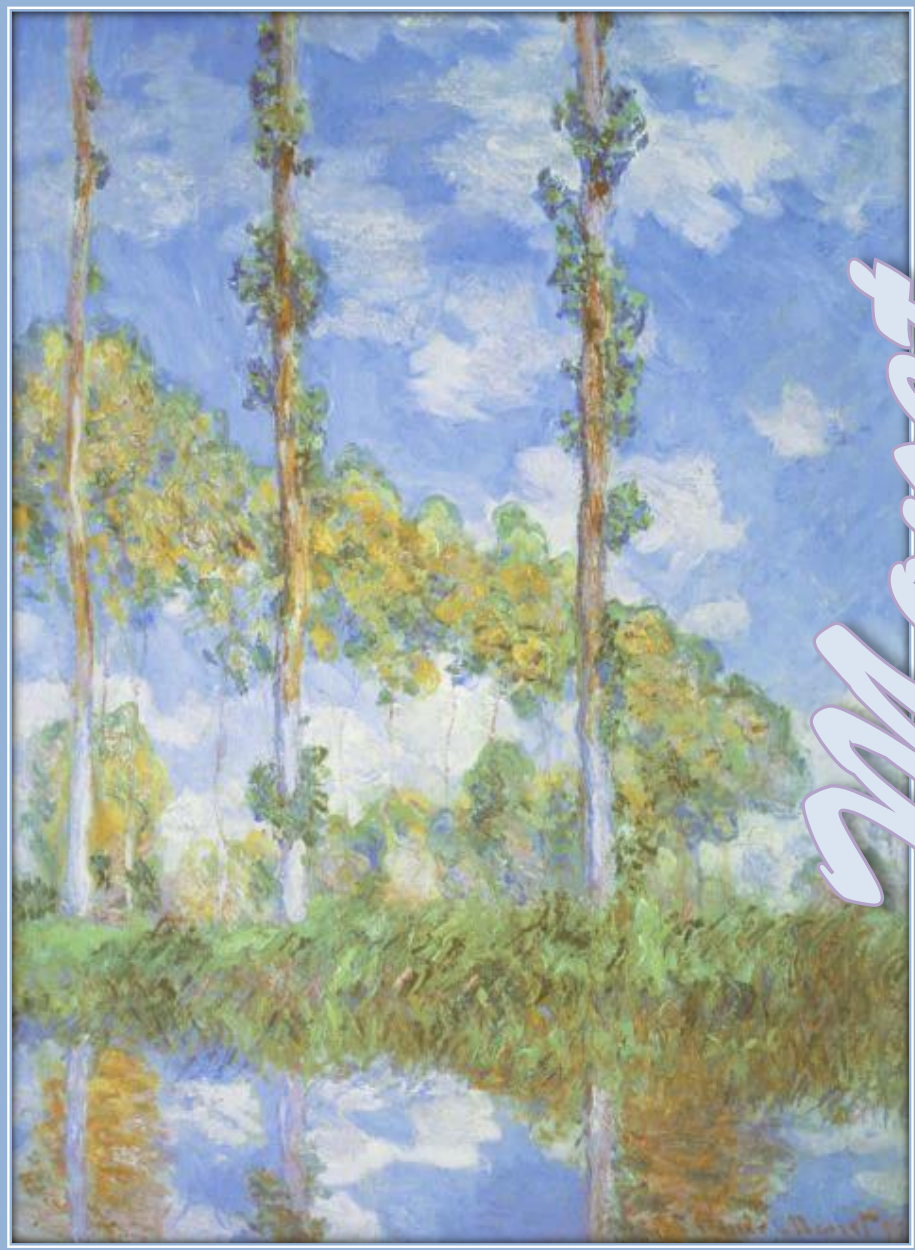
*Poplars, Autumn, 1891*



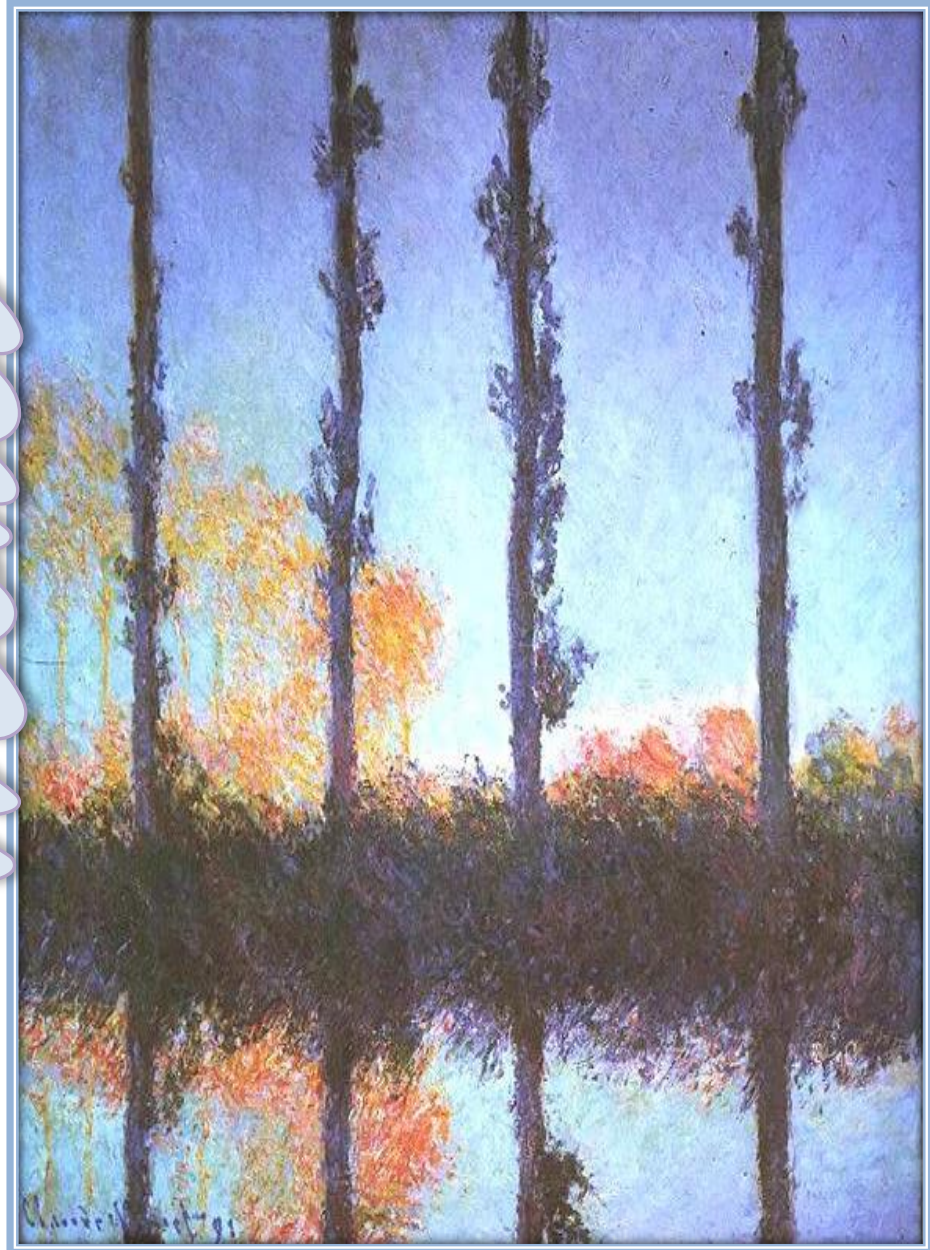
*Poplars, Autumn, 1891*

Monet

Monet



*Poplars in the Sun, 1891*



*Poplars, 1891*

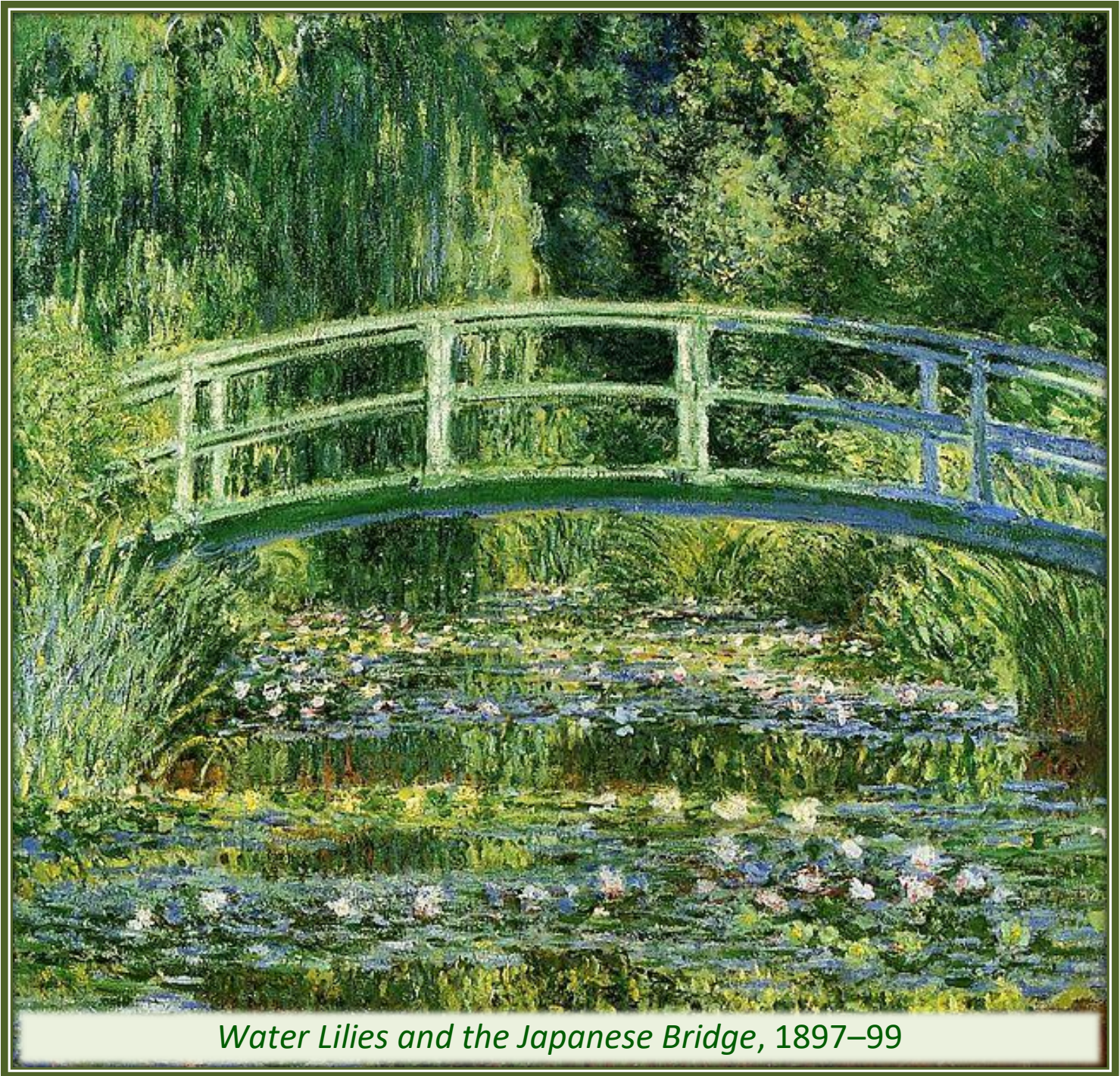
Monet

# Claude Monet



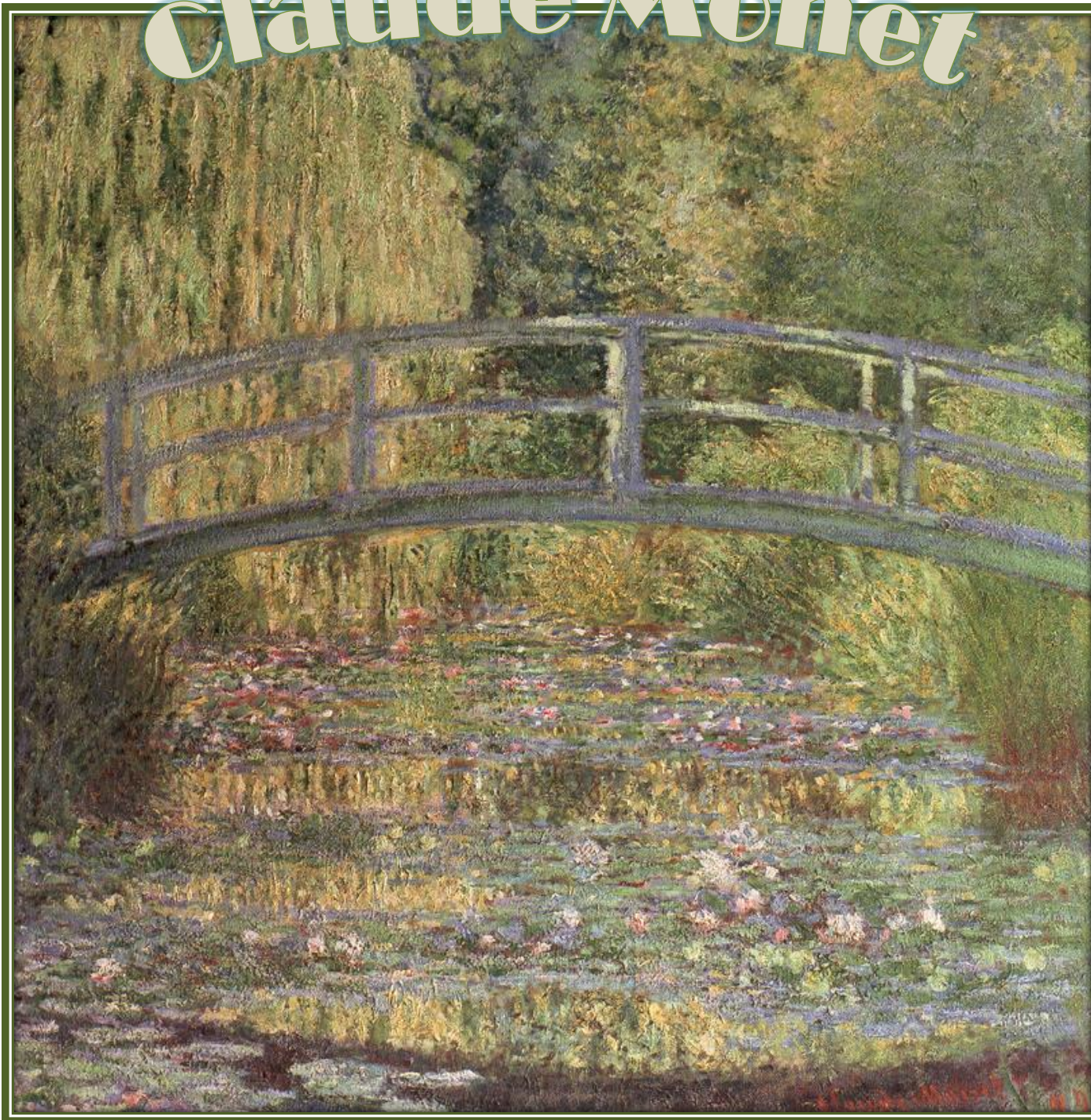
*The Seine Near Giverny, 1897*

# Claude Monet



*Water Lilies and the Japanese Bridge, 1897–99*

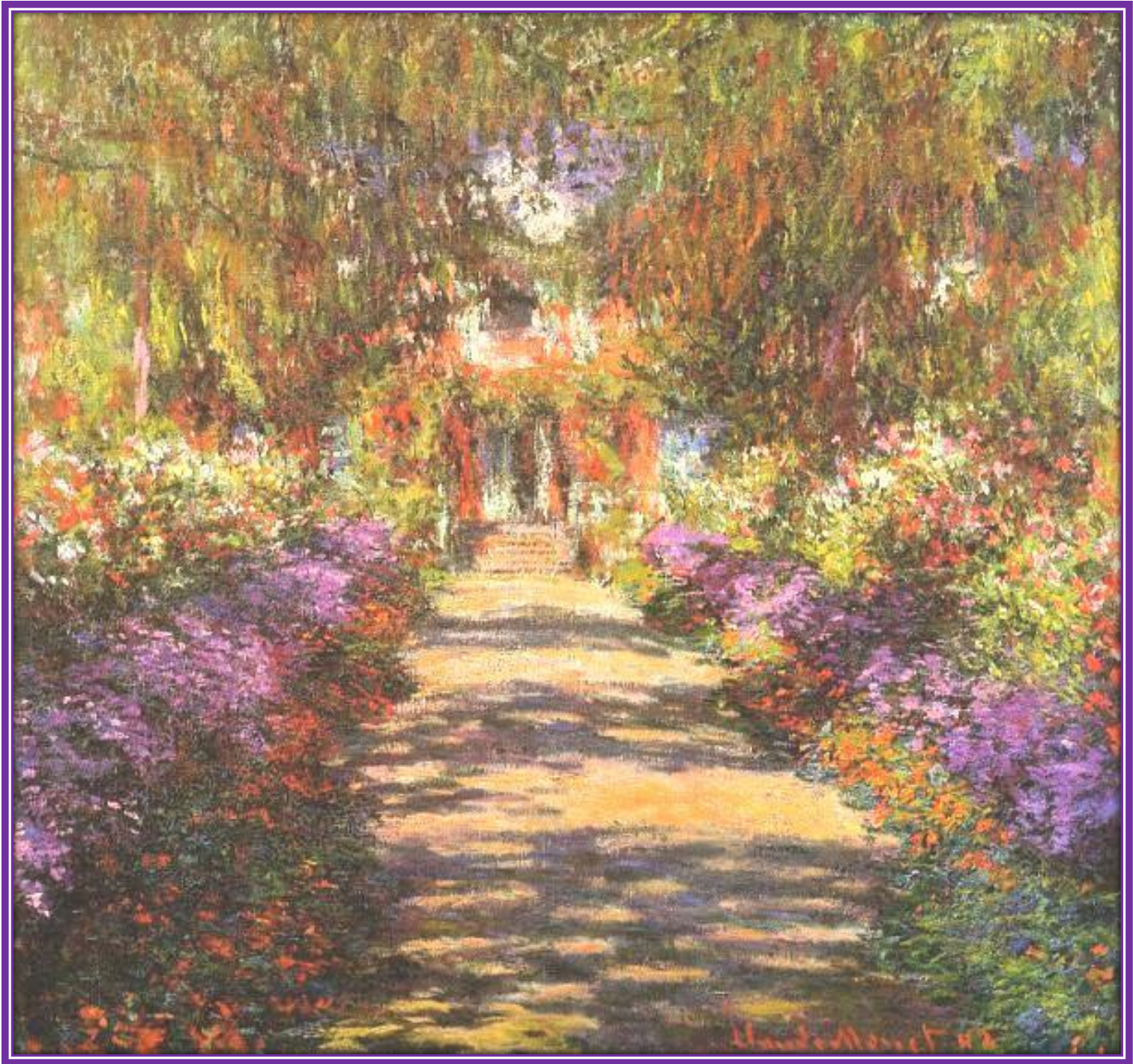
# Claude Monet



*The  
Water  
Lily  
Pond,  
1899*

# Claude Monet

*Main Path  
through the  
Garden at  
Giverny,  
1901*





*The Houses of*

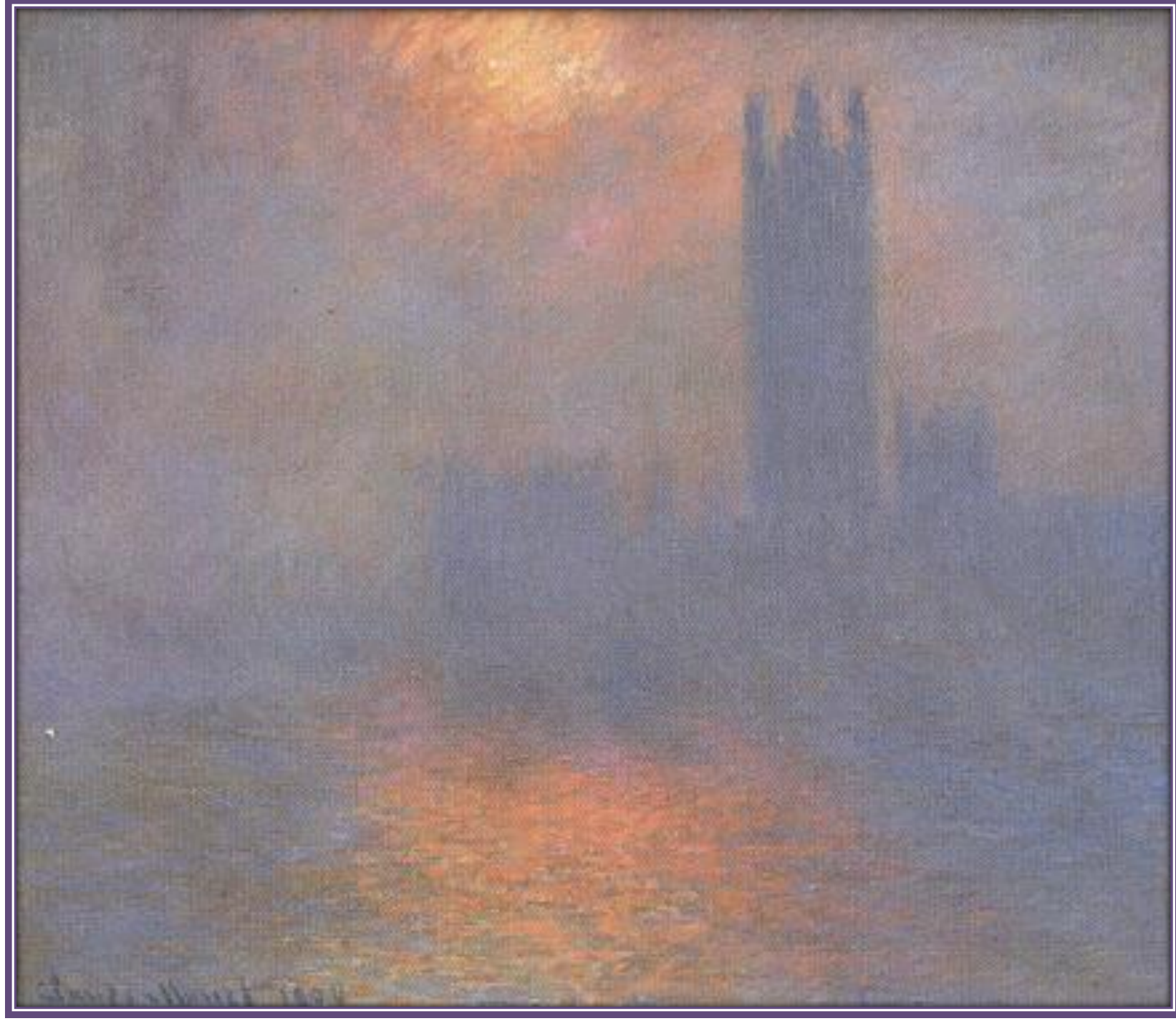
# Claude Monet

*Parliament, London, 1900–01*



*Houses of Parliament  
(Rays of Sun and Fog), 1901*

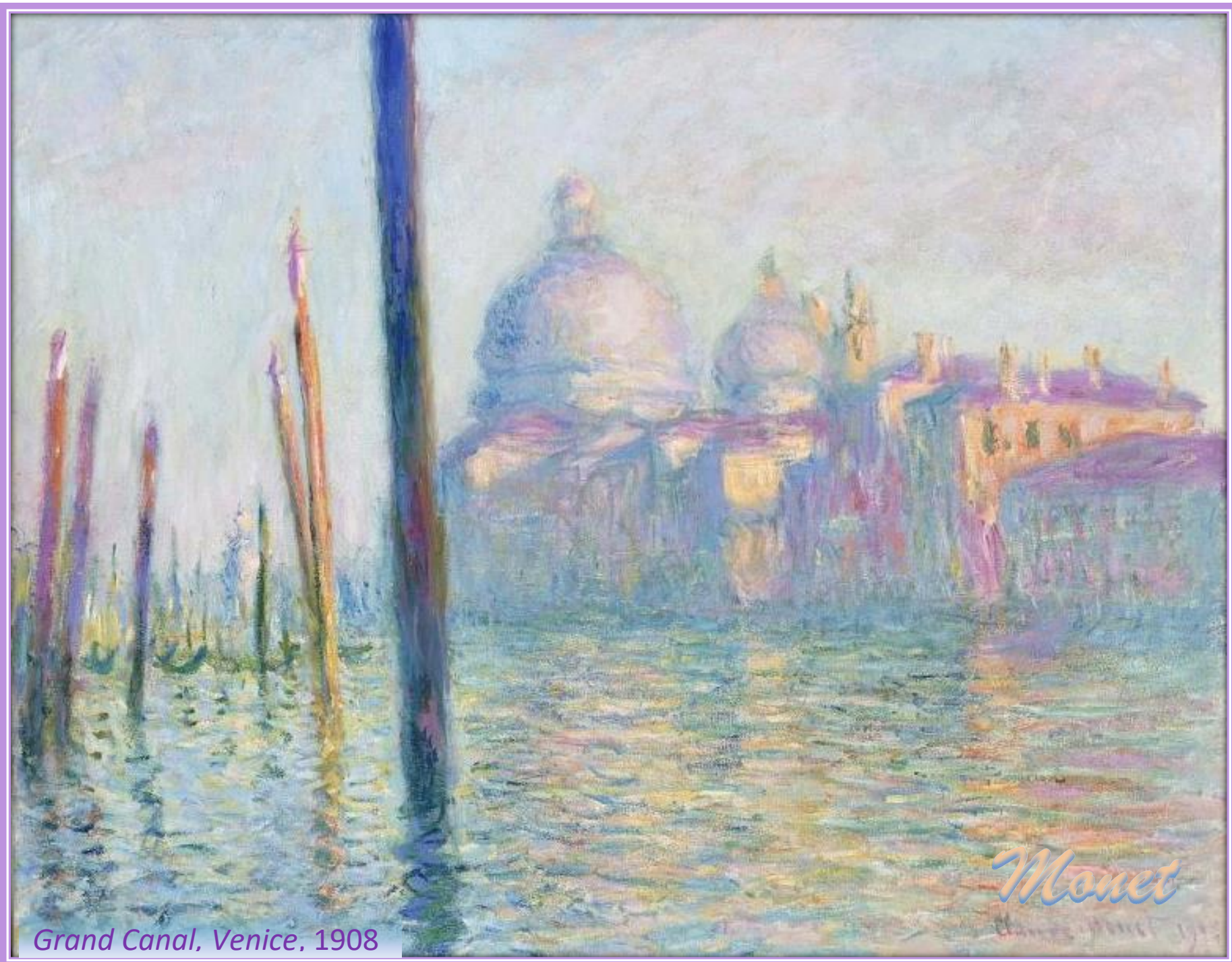
# Claude Monet



# Claude Monet

*Water  
Lilies,  
1903*





Grand Canal, Venice, 1908

Monet



*Monet*

Palazzo da Mula, Venice, 1908

*Monet*



*Venice, Twilight. 1908*

# Claude Monet



Claude Monet

*The Rose Arches, Giverny,*

1913

Claude Monet



*Water Lilies,*  
c. 1915



# Water Lilies



Actual size of this set of four Lily paintings: ~ 3.25' x 6.5' (39 ¾" x 78 ¾") Oil on Canvas  
1917 - 1919

# Claude Monet

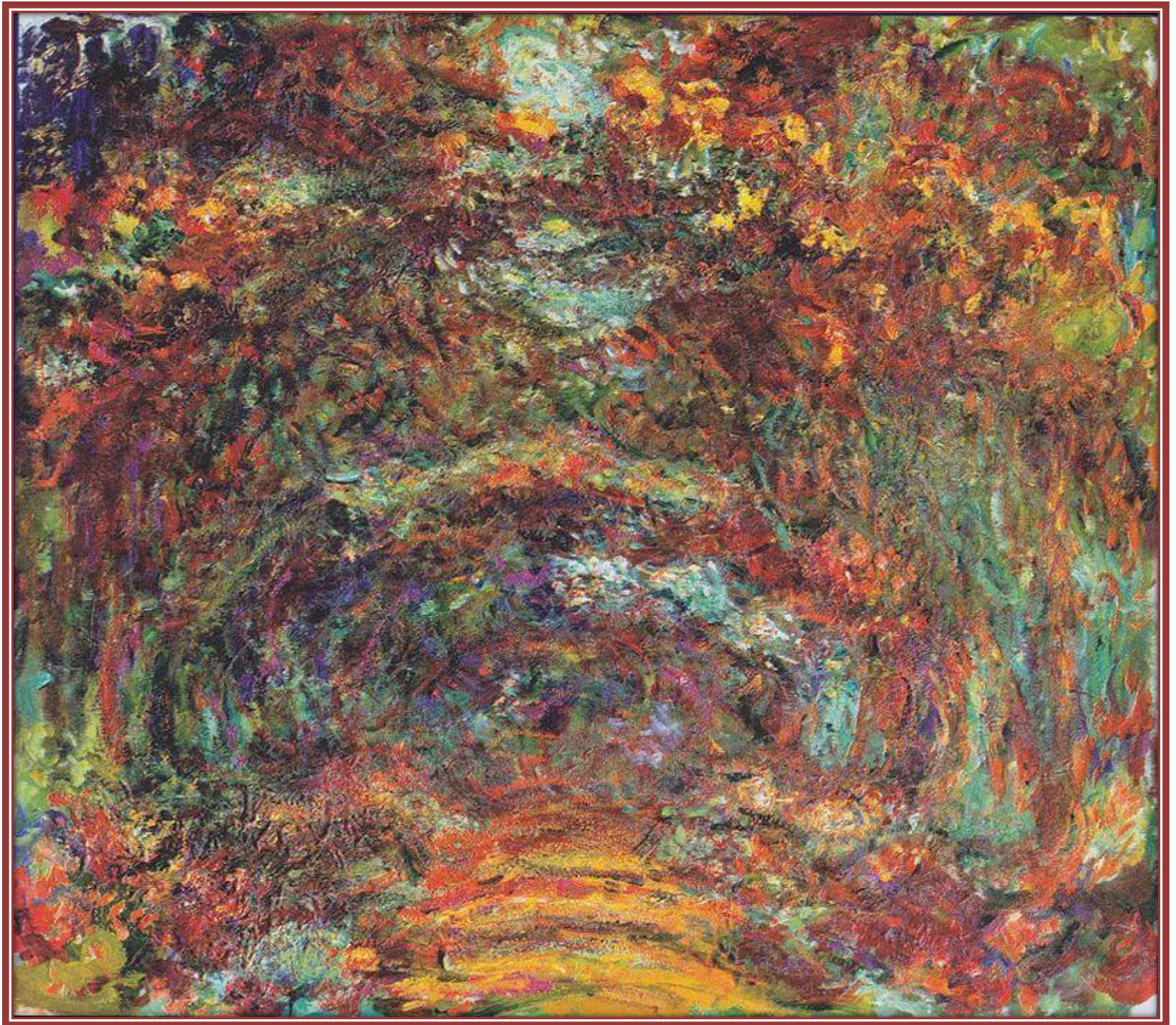


*The Japanese Footbridge, 1920–22*

*Monet*

# MONNET

*The Rose  
Walk,  
Giverny,  
1920–22*



Information regarding the painting: *Camille Monet and a Child in the Artist's Garden in Argenteuil, 1875.*

Camille, Monet's first wife, is shown with a child in the garden of their house in Argenteuil, near Paris, where they lived between 1872 and 1877.